



GRESHAM
TRANSPORTATION
SYSTEM PLAN

SAC
MEETING #2
JULY 10, 2024
6:00 PM – 8:00 PM



PRESENTATION OVERVIEW

- Project schedule recap
- Reviewed plans
- Initial gaps and discussion
- Ranking exercise
- Discussion and next steps

PROJECT TASKS AND SCHEDULE



DEFINITIONS (FROM GRESHAMTSP)



- **POLICY**

A policy is a statement identifying Gresham's position and a definitive course of action. Policies are more specific than goals. They often identify the City's position in regard to implementing goals. However, they are not the only actions the City can take to accomplish goals.

- **ACTION MEASURE:**

An action measure is a statement that outlines a specific City project or standard, which if executed, would implement goals and policies. Action measures also refer to specific projects, standards, or courses of action the City desires other jurisdictions to take in regard to specific issues. These statements can also define the relationship the City desires to have with other jurisdictions and agencies in implementing Comprehensive Plan goals and policies.



HOW DO THE GOALS FIT IN?



Policies and actions inform Gresham's decision-making alongside the goals



The goals will help us to evaluate project priorities later in this process



While related, the goals and policies will not necessarily be a “one-to-one” to each other

REVIEWED PLANS

- City of Gresham Comprehensive Plan
- City of Gresham 2013 Transportation System Plan (TSP)
- City of Gresham Active Transportation Plan (ATP)
- City of Gresham Public Works Standards
- City of Gresham Climate Action Plan (CAP)
- Metro 2023 Regional Transportation Plan (RTP)
- Metro Regional Mobility Policy
- TPR Amendments from the Climate Friendly and Equitable Communities rulemaking

EXISTING TSP GUIDING PRINCIPLES AND POLICIES

TSP Guiding Principles

- Ensure the transportation system provides a **safe, secure** and **attractive** travel experience that supports **livability** and **community** interaction.
- Ensure **access** and **mobility** by increasing multimodal travel options and providing a continuous, interconnected transportation system.
- Facilitate development of a transportation system that aligns with adopted local and regional land use plans, is responsive to the surrounding **community** and is **cost effective** to develop and maintain.

TSP Policies

- Policy 1: Develop and promote a balanced transportation system that provides a **variety of travel options** and reduces the need to rely on automobiles.
- Policy 2: Plan, implement and maintain an **efficient** transportation system.
- Policy 3: Provide a transportation system that maximizes **accessibility** to and within regional centers, town centers, transit corridors, station areas, and employment centers.
- Policy 4: Provide a **safe** transportation system.

These slides will not be read word-for-word but are provided for TAC and SAC quick-reference.

EXISTING TSP GOALS

- **Accessibility** – The ability to reach desired goods, services, activities and destinations with relative ease, within a reasonable time, at a reasonable cost and with reasonable choices.
- **Economic Development** – Constructing and maintaining a transportation system that supports new business as well as business retention, expansion and relocation.
- **Efficiency** – Constructing and maintaining a transportation system that performs and functions as fluidly as possible.
- **Environmental Stewardship** – Meeting the needs of the present generation without compromising future needs and resources
- **Healthy Equity** – Promoting health with adequate biking and walking routes and trails among all transportation system users
- **Livability** – Tying the quality and location of transportation facilities to broader opportunities such as access to good jobs, affordable housing, quality schools and safe streets.
- **Mobility** – The ability to move people and goods to destinations efficiently and reliably.
- **Safety** – Minimizing dangers or risks in the transportation system so users feel safe driving, biking, walking and taking transit.
- **Sustainable Funding** – Ensuring the establishment of funding mechanisms sufficient to support the continuous and safe operation of the transportation system.

These slides will not be read word-for-word but are provided for TAC and SAC quick-reference.

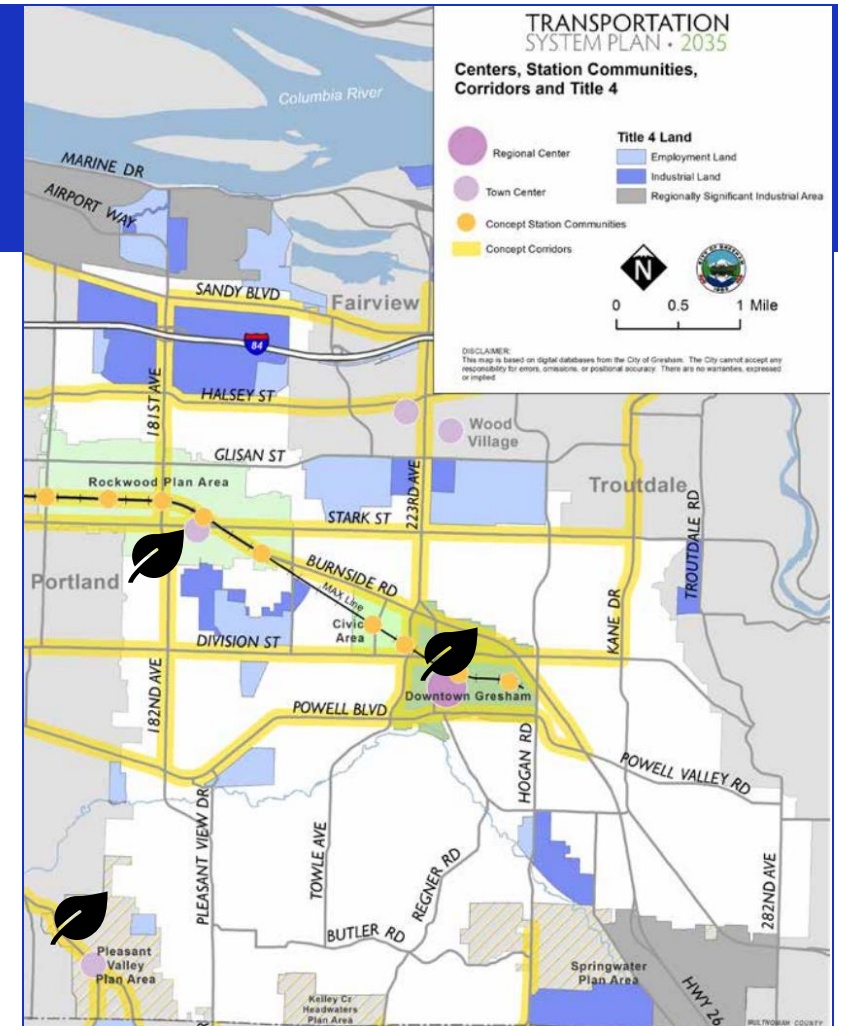
REGIONAL MOBILITY POLICIES

- Mobility Policy 1: Ensure that land use decisions and investments in the transportation system enhance **efficiency** in how people and goods travel to where they need to go.
- Mobility Policy 2: Provide people and businesses a variety of seamless and well-connected travel modes and services that increase **connectivity**, increase **choices** and **access** to low carbon transportation options so that people and businesses can conveniently and affordably reach the goods, services, places and opportunities they need to thrive.
- Mobility Policy 3: Create a **reliable** transportation system that people and businesses can count on to reach destinations in a predictable and reasonable amount of time.
- Mobility Policy 4: Prioritize the **safety** and **comfort** of travelers by all modes when planning and implementing mobility solutions.
- Mobility Policy 5: Prioritize investments that ensure that Black, Indigenous and people of color (BIPOC) community members and people with low incomes, youth, older adults, people living with disabilities and other marginalized and underserved populations have **equitable access** to safe, reliable, affordable and convenient travel choices that connect to key destinations.
- Mobility Policy 6: Use **mobility performance measures and targets** that have direct for system planning and evaluating the impacts of plan amendments including Vehicle Miles Traveled (VMT) per capita for home-based trips and VMT/employee for commute trips to/from work, system completeness, and hours of congestion on the throughways.

These slides will not be read word-for-word but are provided for TAC and SAC quick-reference.

CFEC PROGRAM DESIRED OUTCOMES

- Meeting legislative climate policy and goals, including monitoring and reporting progress over time
- Increasing housing and employment options
- Fostering vibrant downtowns and neighborhood centers
- Improving transportation choices and infrastructure for electric vehicle charging
- Creating connected, safe, and complete networks
- Promoting equitable outcomes
- Prioritizing transportation investments in regional centers and town centers (in other metro areas these are called climate-friendly areas, CFAs), in neighborhoods with underserved populations, and to create access to key destinations



🍃 Gresham's centers: Downtown/Civic Regional Center and the Rockwood and Pleasant Valley Town Centers.

These slides will not be read word-for-word but are provided for TAC and SAC quick-reference.



Safety

Elevate Vision Zero
Add complete streets policies



Climate Change

Add VMT per capita, greenhouse gas emissions
Note EV accommodation needs
Incorporate other tools (shading, runoff management)



Equity

Elevate health equity to broader equity



Micromobility/ Curb Management/ New Technologies

Micromobility (i.e., e-scooters and e-bikes)
Mobility hubs
Curb management
Technology



Parking

Update with City's Parking Management Manual efforts
Add any remaining CFEC program work

IDENTIFIED GAPS – MAJOR UPDATES & INITIAL DISCUSSION

EXISTING TSP GOALS – POTENTIAL EDITS

- **Accessibility** – Providing the ability to reach desired goods, services, activities and destinations with relative ease, within a reasonable time, at a reasonable cost and with reasonable a full range of mode choices.
- **Economic Development** – Constructing and maintaining a transportation system that supports new business as well as business retention, expansion and relocation.
- **Efficiency** – Constructing and maintaining a transportation system that performs and functions as fluidly as possible.
- ~~Environmental Stewardship~~ **Climate Adaptation** – Meeting the transportation needs of the community present generation without compromising future needs and resources and minimizing adverse effects on the climate.
- ~~Healthy Equity~~ **Equity** – Promoting health with adequate biking and walking routes and trails among all transportation system users Providing all community members -- regardless of race, economic status, age, and ability -- access to safe, comfortable, affordable, sustainable, and reliable transportation choices to meet their daily transportation needs.

EXISTING TSP GOALS – POTENTIAL EDITS

- **Livability** – Tying the quality and location of transportation facilities to broader opportunities such as access to good jobs, affordable housing, quality schools and safe streets.
- **Mobility** – Moving people and goods to destinations efficiently and reliably.
- **Safety** – ~~Minimizing dangers or risks in the transportation system so users feel safe driving, biking, walking and taking transit.~~ Eliminating all transportation-related serious injury and fatal crashes through design, education, and enforcement.
- **Sustainable Funding** – Ensuring the establishment of funding mechanisms sufficient to support the continuous and safe operation and maintenance of the transportation system.



ACCESSIBILITY



- **Accessibility** – Providing the ability to reach desired goods, services, activities and destinations with relative ease, within a reasonable time, at a reasonable cost and with a full range of mode choices.
 - Example action: . Locate major activity centers in areas that are accessible by a variety of transportation modes.



ECONOMIC DEVELOPMENT

- **Economic Development** – Constructing and maintaining a transportation system that supports new business as well as business retention, expansion and relocation.
 - Example action: Require new development to provide multi-modal street design and public utilities to serve the site and to extend public infrastructure to provide for the logical continuation of the City’s utility and street systems.





EFFICIENCY



- **Efficiency** – Constructing and maintaining a transportation system that performs and functions as fluidly as possible.
 - Example action: . Establish a hierarchy of connected collector and local streets. Require Neighborhood Circulation Plans that seek to balance local traffic among local streets, provide multi-directional access to the collector-arterial system, reduce non-local traffic, and ensure optimal emergency response.



CLIMATE ADAPTATION



- **Climate Adaptation** – Meeting the transportation needs of the community and minimizing adverse effects on the climate.
 - Example action: Promote incentives and commute trip reduction programs, bicycling, walking, taking transit, ridesharing, carpooling, telecommuting, parking management, flexible work hours, and other travel demand management strategies aimed at reducing the number and length of single occupant vehicle trips.



EQUITY



- **Equity** – Providing all community members -- regardless of race, economic status, age, and ability -- access to safe, comfortable, affordable, sustainable, and reliable transportation choices to meet their daily transportation needs.
- Example action: Increase mobility and accessibility for underserved communities by improving the bicycle network through equitable investments in infrastructure and programs



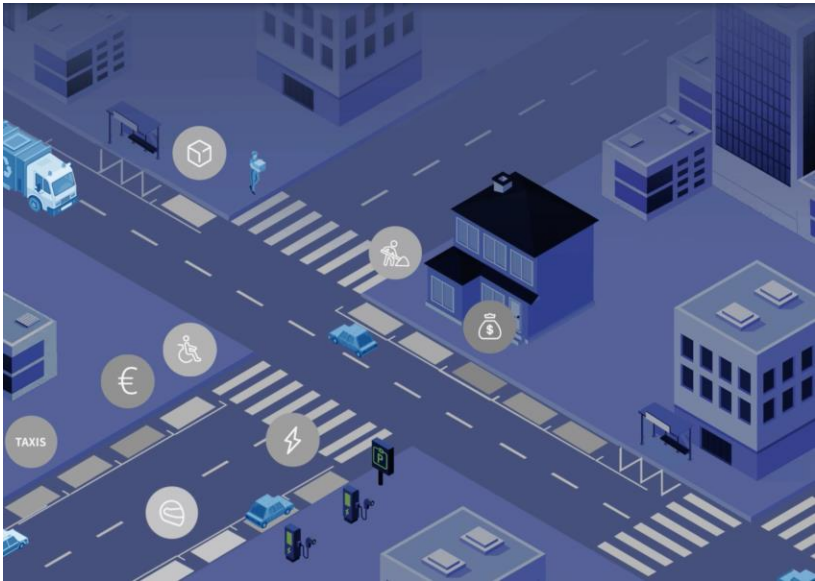
LIVABILITY



- **Livability** – Tying the quality and location of transportation facilities to broader opportunities such as access to good jobs, affordable housing, quality schools and safe streets.
 - Example action: Provide bicycle and pedestrian facilities and transit access to major activity centers.



MOBILITY



- **Mobility** – Moving people and goods to destinations efficiently and reliably.
 - Example action: Provide and promote a range of viable transportation options that respond to all communities' needs for access, mobility, safety, comfort and convenience.



SAFETY

- **Safety** – Eliminating all transportation-related serious injury and fatal crashes through design, education, and enforcement.
 - Example action: . Monitor high crash locations and types and develop appropriate programs and projects to address problems.





SUSTAINABLE FUNDING



- **Sustainable Funding** – Ensuring the establishment of funding mechanisms sufficient to support the continuous and safe operation and maintenance of the transportation system.
 - Example action: Adopt and update a 20-year capital improvement plan that addresses all transportation modes every five years, as part of the capital improvement program.