

# CURBSIDE RECYCLING GUIDELINES



YES, YOU'LL WANT TO CUT ME OUT!

## What to put in... What to leave out!

### Mixed Recycling

# IN OUT

#### PAPER & CARDBOARD



- Newspapers • Magazines
- Phonebooks • Opened junk mail
- Office paper • Cereal and shoe boxes
- Shredded paper • Milk, juice Soup cartons (rinse and drained)
- Flatten cardboard boxes

- Paper with food on it (such as pizza boxes) • Plastic or foil-coated paper • Paper with "wet strength" (such as frozen food boxes, coffee cups, paper plates) • Napkins • Paper towels and tissues

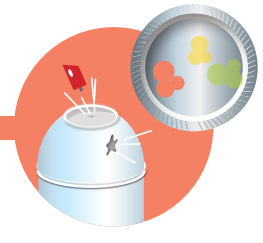
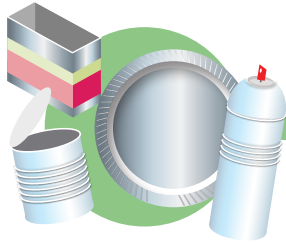
#### PLASTICS



- Rinse all containers*
- Plastic bottles and tubs (6 ounces or larger) • Buckets (5 gallons or smaller)

- Plastic bags • Lids • Clamshell (to-go) containers • Flatware • Cups
- Bottles that have come in contact with motor oil, pesticides or herbicides • Styrofoam

#### SCRAP METAL

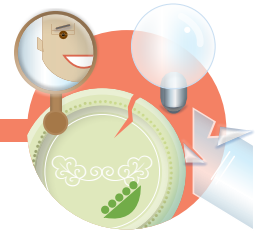


- Rinse all containers, place metal lids inside cans and crimp closed.*
- Scrap metal smaller than 30 inches in all directions and less than 30 pounds
  - Metal cans • Foil • Pie plates Trays • Empty aerosol cans

- Metal that has plastic, food, or other non-metal materials attached
- Sharp metal such as knives, razors
- Too large to fit in roll cart

#### GLASS

RECYCLE SEPARATELY IN YOUR CURBSIDE BIN



- Rinse all containers*
- Bottles and jars (recycle separately in your yellow curbside bin)

- Glass shards • Plates • Glassware • Cookware • Vases • Lightbulbs
- Mirrors • Picture frames
- Window glass • Caps or lids

#### MOTOR OIL

Curbside customers should put oil in transparent jugs and place at the curb for pickup by haulers. Apartment residents need special pickup. Call Metro at 503-234-3000.



### WHERE TO TAKE RECYCLING YEAR ROUND

#### NON-CURBSIDE PLASTICS

Far West Recycling NE, 12820 NE Marx St., Portland 97230

#### STYROFOAM

Far West Recycling SE, 4930 SE 26th Ave., Portland 97202

\*A fee applies at this location.

#### PLASTIC BAGS

Grocery stores and Far West Recycling, all locations

#### SMALL APPLIANCES AND ELECTRONICS

Far West Recycling, all locations; Total Reclaim, 6427 NE 59th Place, Portland 97218

#### FLUORESCENT LIGHTS & BATTERIES

Batteries Plus,\* 2438 SE Burnside, Gresham; Total Reclaim,\* 6427 NE 59th Place, Portland 97218; and Orchard Supply, 4030 NE Halsey St., Portland 97232

#### PAPER FOR SHREDDING

Accushred, \* 2131 NW Birdsedale Ave., Gresham

\*A fee applies at this location.



For more information about where to take recyclables year-round call Metro's Recycling Hotline at 503-234-3000 or visit [OregonMetro.gov/tools-living/garbage-and-recycling](http://OregonMetro.gov/tools-living/garbage-and-recycling)