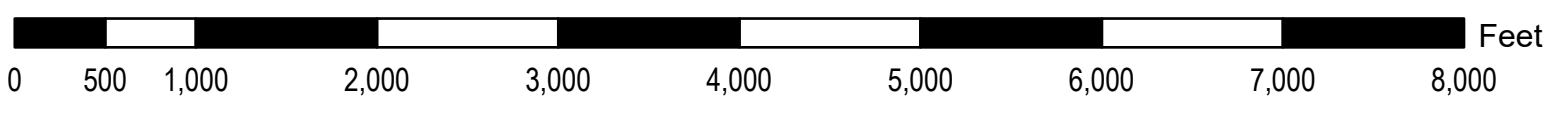


# GRESHAM COMMUNITY PLAN MAP

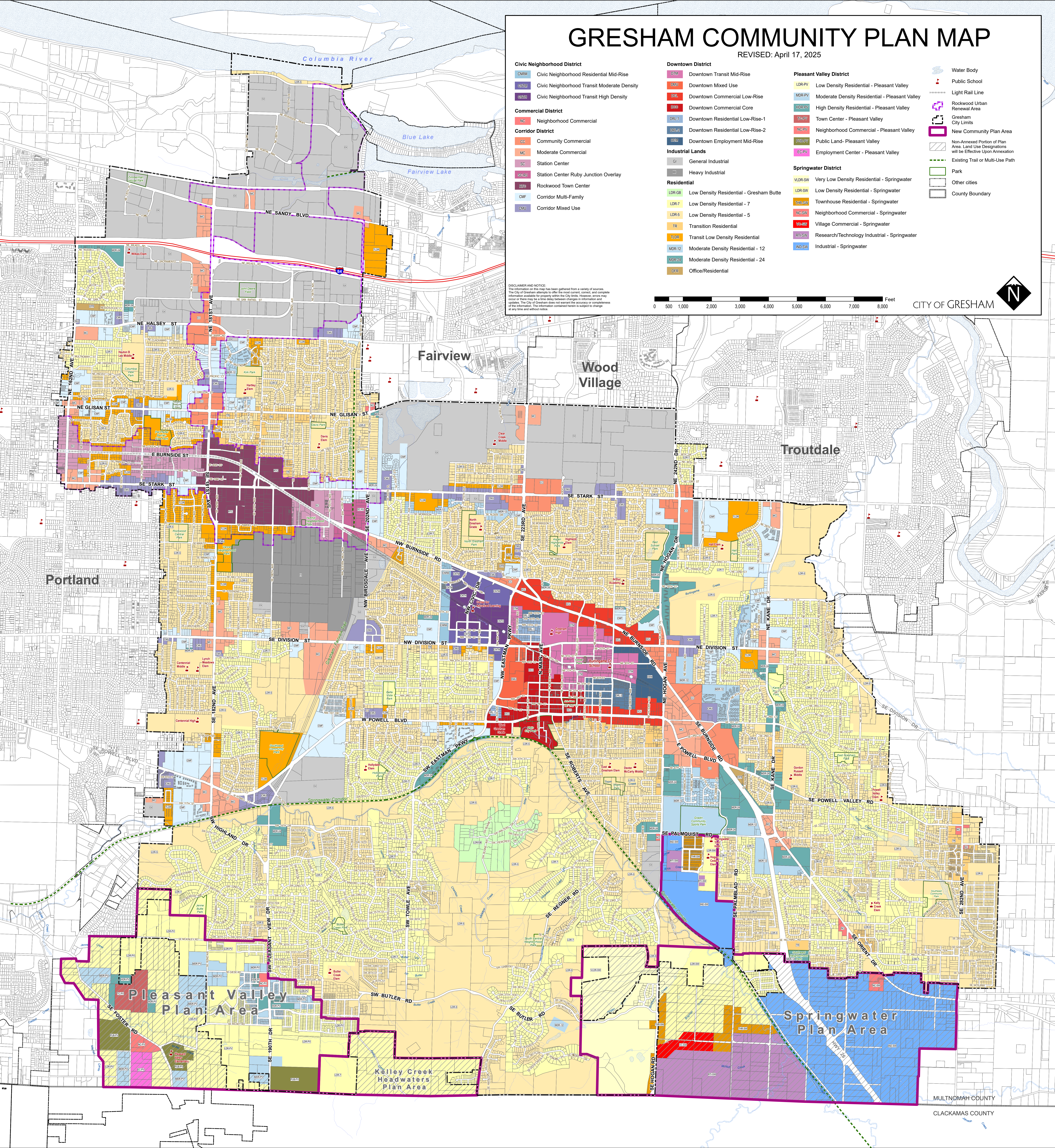
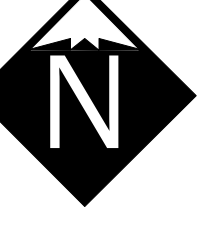
REVISED: April 17, 2025

<b>Civic Neighborhood District</b>	<b>Downtown District</b>	<b>Pleasant Valley District</b>	<b>Springwater District</b>
<b>CNRM</b> Civic Neighborhood Residential Mid-Rise	<b>DTM</b> Downtown Transit Mid-Rise	<b>LDR-PV</b> Low Density Residential - Pleasant Valley	<b>VLDR-SW</b> Very Low Density Residential - Springwater
<b>CNMD</b> Civic Neighborhood Transit Moderate Density	<b>DMU</b> Downtown Mixed Use	<b>MDR-PV</b> Moderate Density Residential - Pleasant Valley	<b>LDR-SW</b> Low Density Residential - Springwater
<b>CNTH</b> Civic Neighborhood Transit High Density	<b>DTCL</b> Downtown Commercial Low-Rise	<b>HDR-PV</b> High Density Residential - Pleasant Valley	<b>LDR-7</b> Low Density Residential - 7
<b>Commercial District</b>	<b>DTCC</b> Downtown Commercial Core	<b>TC-PV</b> Town Center - Pleasant Valley	<b>TR</b> Transition Residential
<b>CC</b> Neighborhood Commercial	<b>DTCL-1</b> Downtown Residential Low-Rise-1	<b>NB-PV</b> Neighborhood Commercial - Pleasant Valley	<b>TLDR</b> Transit Low Density Residential
<b>CCM</b> Community Commercial	<b>DTCL-2</b> Downtown Residential Low-Rise-2	<b>PL-PV</b> Public Land - Pleasant Valley	<b>MDR-12</b> Moderate Density Residential - 12
<b>CCM</b> Moderate Commercial	<b>DEMR</b> Downtown Employment Mid-Rise	<b>EC-PV</b> Employment Center - Pleasant Valley	<b>MDR-24</b> Moderate Density Residential - 24
<b>SC</b> Station Center	<b>GI</b> General Industrial	<b>Residential</b>	<b>GER</b> Office/Residential
<b>SCRO</b> Station Center Ruby Junction Overlay	<b>HI</b> Heavy Industrial	<b>LDR-GB</b> Low Density Residential - Gresham Butte	
<b>RTC</b> Rockwood Town Center		<b>LDR-5</b> Low Density Residential - 5	
<b>CMF</b> Corridor Multi-Family		<b>LDR-7</b> Low Density Residential - 7	
<b>CMU</b> Corridor Mixed Use		<b>TR</b> Transition Residential	

**DISCLAIMER AND NOTICE:**  
The information on this map has been gathered from a variety of sources. The City of Gresham attempts to provide the most current, correct, and complete information available for property within the City limits. However, errors may occur or there may be a time delay between changes in information and updates. The City of Gresham does not warrant the accuracy or completeness of the information. The information contained herein is subject to change at any time and without notice.



CITY OF GRESHAM



MULTNOMAH COUNTY  
CLACKAMAS COUNTY