

Springwater Community Plan



Springwater Plan District Plan Map

September 20, 2005

City of Gresham

Community & Economic Development Department

– New Communities and Annexation

Department of Environmental Services

Springwater Plan District Plan Map

September 20, 2005

Zoning


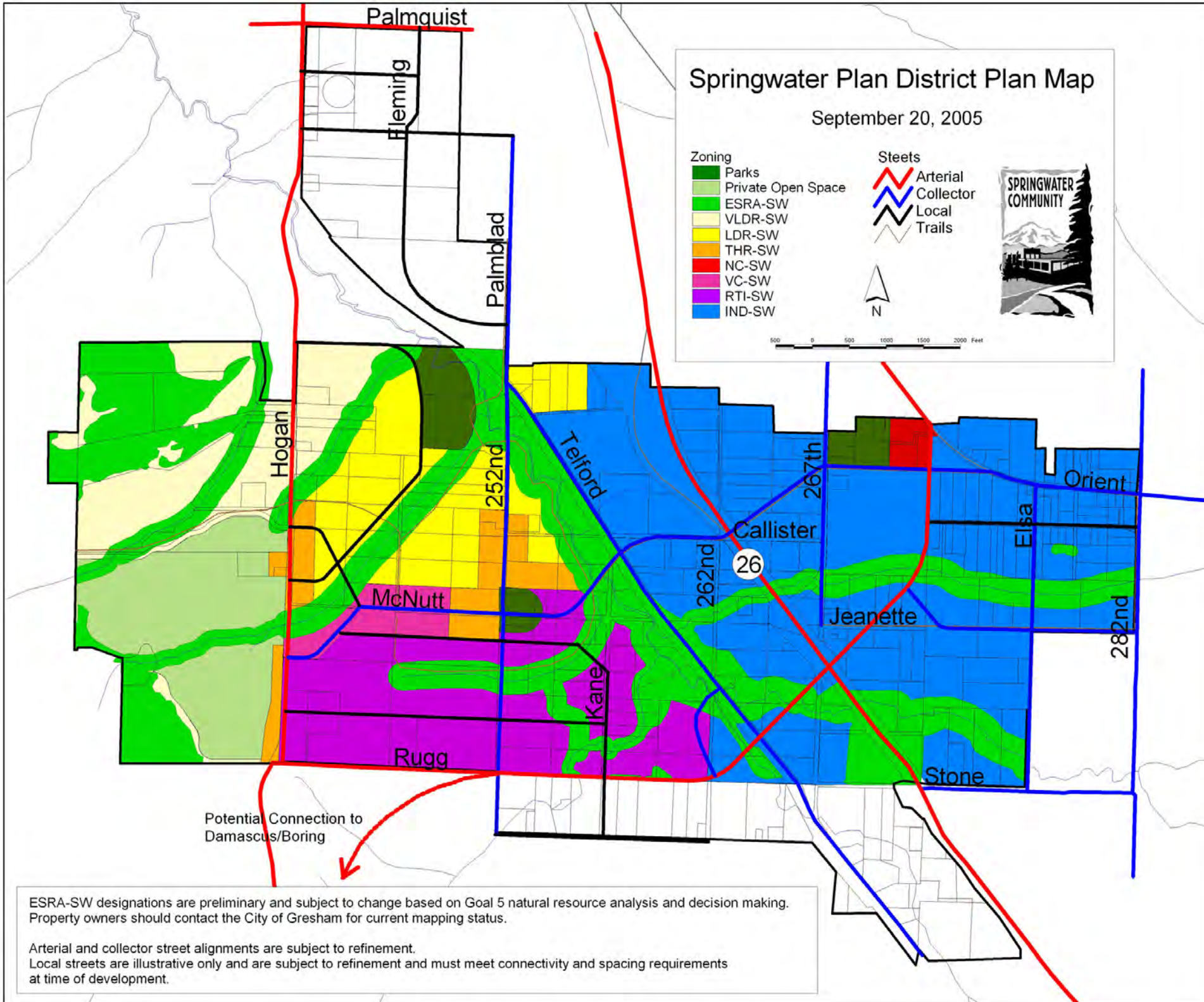
- Parks
- Private Open Space
- ESRA-SW
- VLDR-SW
- LDR-SW
- THR-SW
- NC-SW
- VC-SW
- RTI-SW
- IND-SW

Streets

- Arterial
- Collector
- Local
- Trails

Scale: 0 500 1000 1500 2000 Feet

North Arrow: N







ESRA-SW designations are preliminary and subject to change based on Goal 5 natural resource analysis and decision making. Property owners should contact the City of Gresham for current mapping status.

Arterial and collector street alignments are subject to refinement. Local streets are illustrative only and are subject to refinement and must meet connectivity and spacing requirements at time of development.

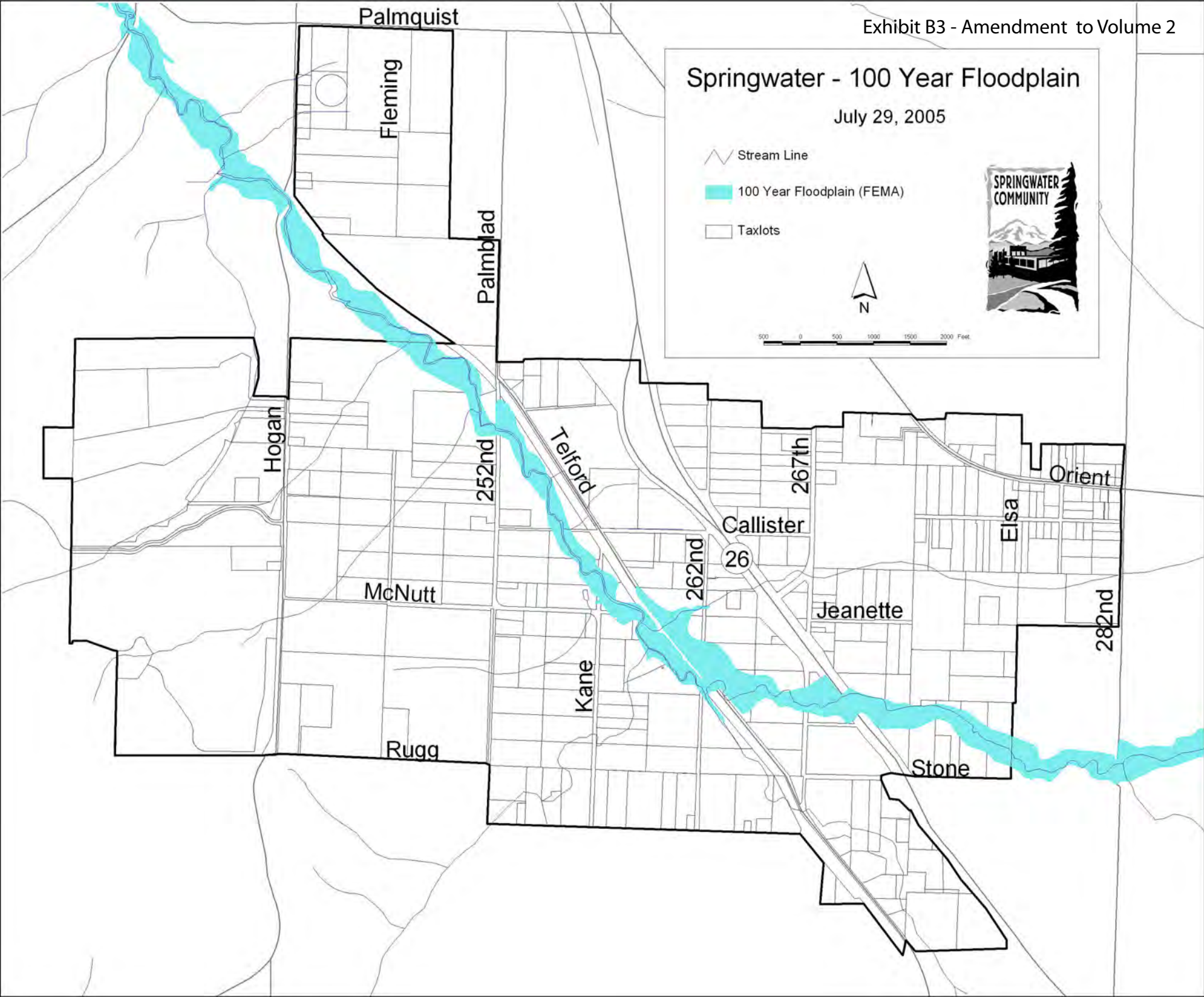
Springwater - 100 Year Floodplain

July 29, 2005

-  Stream Line
-  100 Year Floodplain (FEMA)
-  Taxlots



0 500 1000 1500 2000 Feet



Springwater - Slopes Over 15%

July 29, 2005

-  Stream Line
-  Slopes Over 15%
-  Taxlots



500 0 500 1000 1500 2000 Feet

