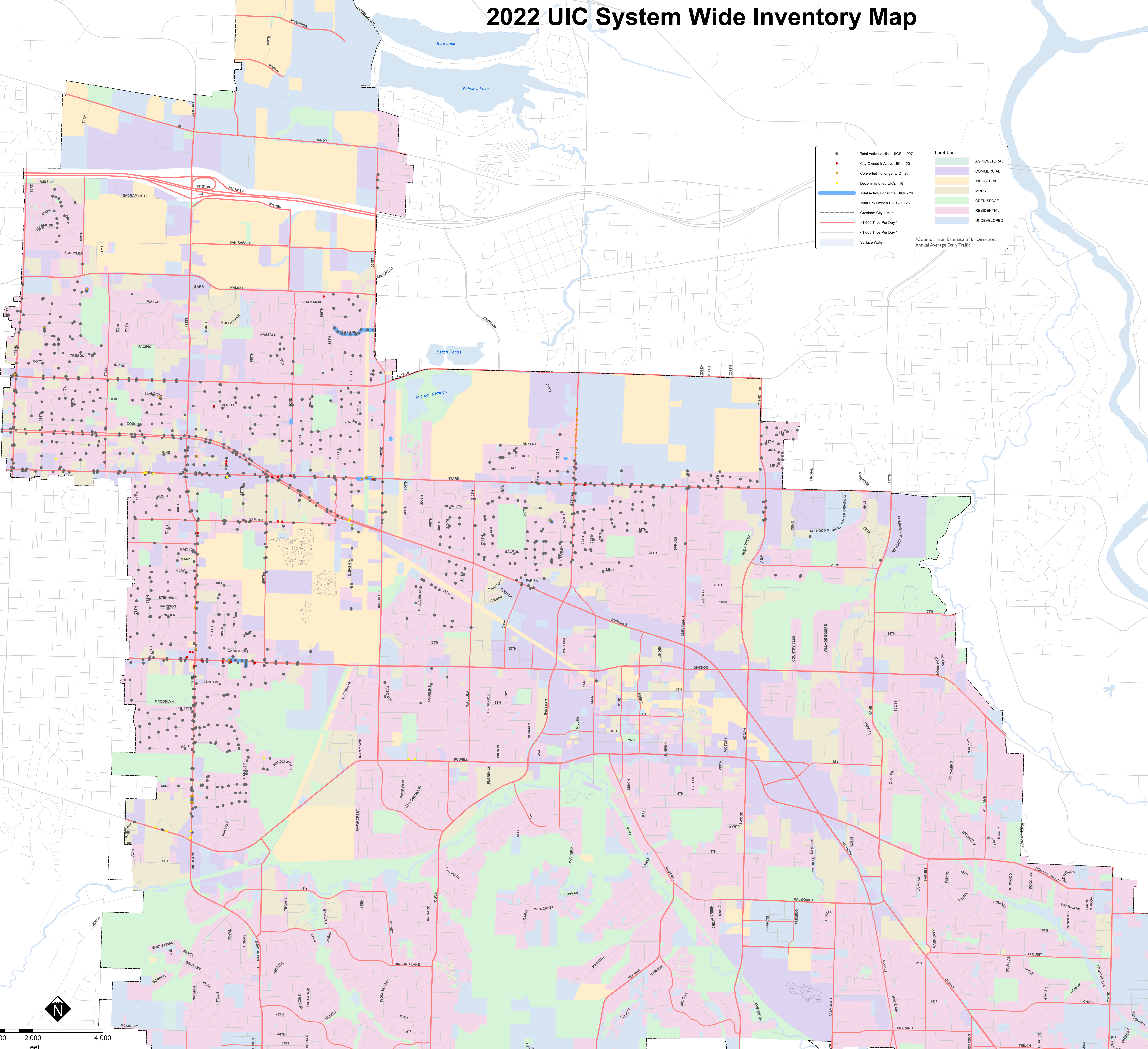


# 2022 UIC System Wide Inventory Map



●	Total Active vertical UICs - 1097	<b>Land Use</b>	AGRICULTURAL
●	City Owned InActive UICs - 20		COMMERCIAL
●	Converted-no longer UIC - 26		INDUSTRIAL
●	Decommissioned UICs - 16		MRES
—	Total Active Horizontal UICs - 26		OPEN SPACE
—	Total City Owned UICs - 1,123		RESIDENTIAL
—	Gresham City Limits		UNDEVELOPED
—	>1,000 Trips Per Day *		
—	<1,000 Trips Per Day *		
—	Surface Water		

\*Counts are an Estimate of Bi-Directional Annual Average Daily Traffic