

*Traditional Row House*



### *Fundamental Style Elements:*

- Building is subdivided horizontally into modules that respond to the individual unit, often with bay windows.
- Building is subdivided vertically into base, middle and top sections.
- Building has tall ground floor with highly articulated entries.
- Facade has parapet or roof elements that are elaborately composed.
- Ornamental elements are prolifically incorporated.
- Entries and windows have elaborate framing details and cornices for window and door elements.
- Doors are tall and highly detailed.
- Windows are proportioned vertically.
- Windows may incorporate stained or beveled and leaded glass.
- Rooflines emphasize sections of the facade with emphasis on the center.



I

F

C

Trad  
Trans  
Cont

M

Trad  
Trans  
Cont

R

TRAD  
Trans  
Cont

A

Trad  
Trans  
Cont

G

Trad  
Trans  
Cont

# Traditional Row House

## Facade Composition and Building Articulation

Features shown in this section correspond to the Rockwood Design Standards found in Sections 7.0103(B)(2)(D) and 7.0503(1)(B)(2)(D). *Italicized elements are not required by the Design Standards but are provided for additional guidance.*

Bay windows projected to visually divide the facade

Changes in windows and projections create distinctions between units.

Recessed window openings add depth and shadows to the facade; window trim is present on all doors and windows

*Repeating pattern of columns or pilasters create order in the facade*

*Belt course above the ground floor differentiates the building base from upper stories*



## Ground Level Details

Features shown in this section correspond to the Rockwood Design Standards found in Sections 7.0103(B)(2)D) and 7.0503(1)(B)(3) (D). *Italicized elements are not required by the Design Standards but are provided for additional guidance.*

Large windows create potential for studios or live/work units

Garage door matches character of other doors and windows



Ground level raised above grade

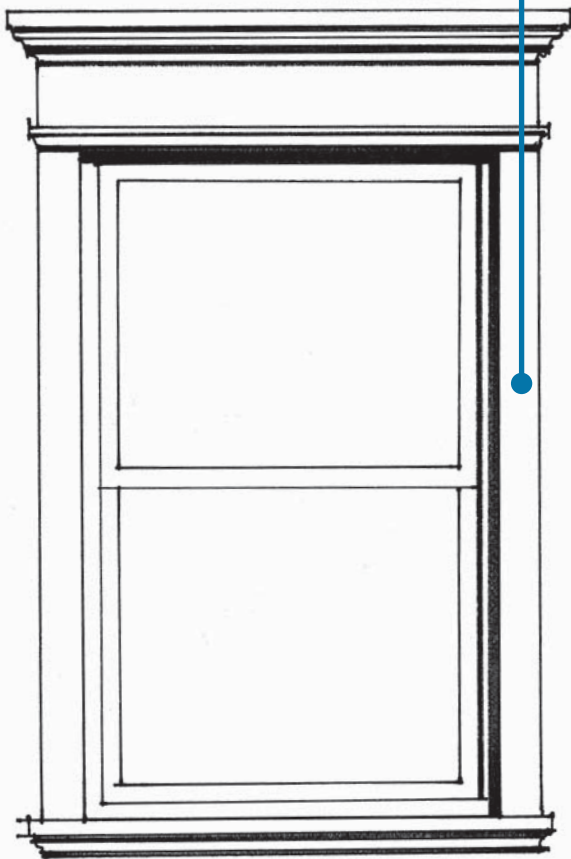
Landscape bed at building base or low fence/wall at property line defines space

# Traditional Row House

## Windows and Transparency

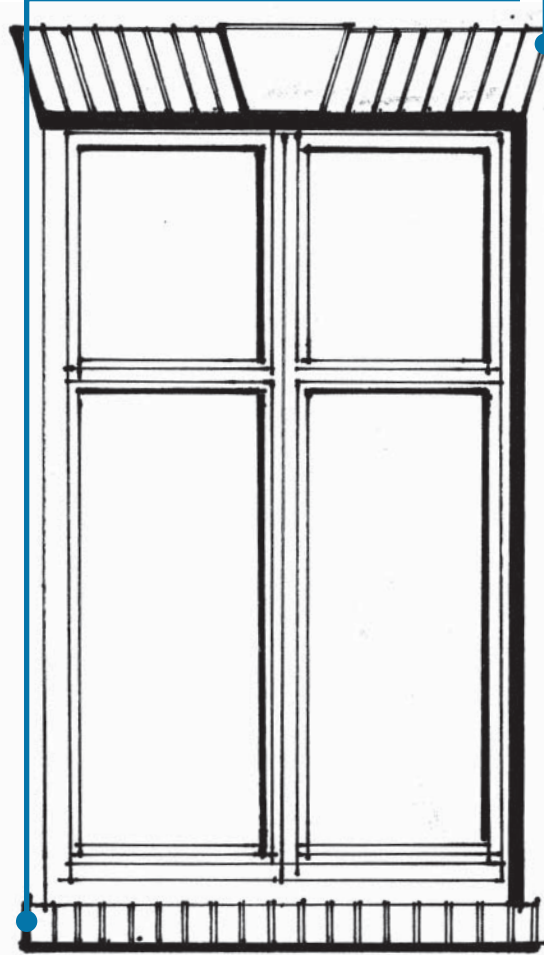
Features shown in this section correspond to the Rockwood Design Standards found in Sections 7.0103(B)(2)(D) and 7.0503(1)(B)(4)(D). *Italicized elements are not required by the Design Standards but are provided for additional guidance.*

Vertically-proportioned windows historically maximize window area while minimizing spanning distance



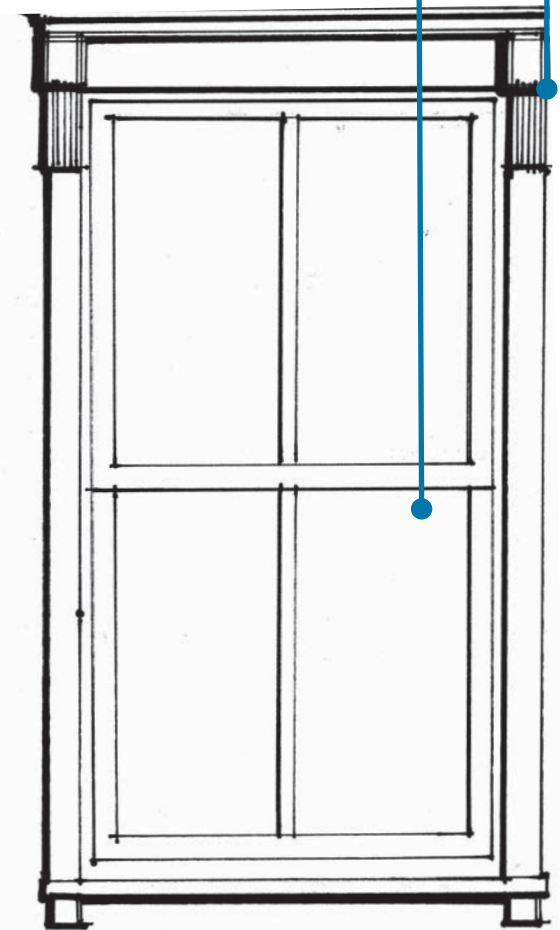
Windows show spanning element, such as an arch (flat arch shown) with keystone; see Section 7.0503(1)(B)(2)(D) and 7.0503(1)(B)(3)(D)

Sills project from window and are typically visually distinct from surrounding wall; see Section 7.0503(1)(B)(3)(D)

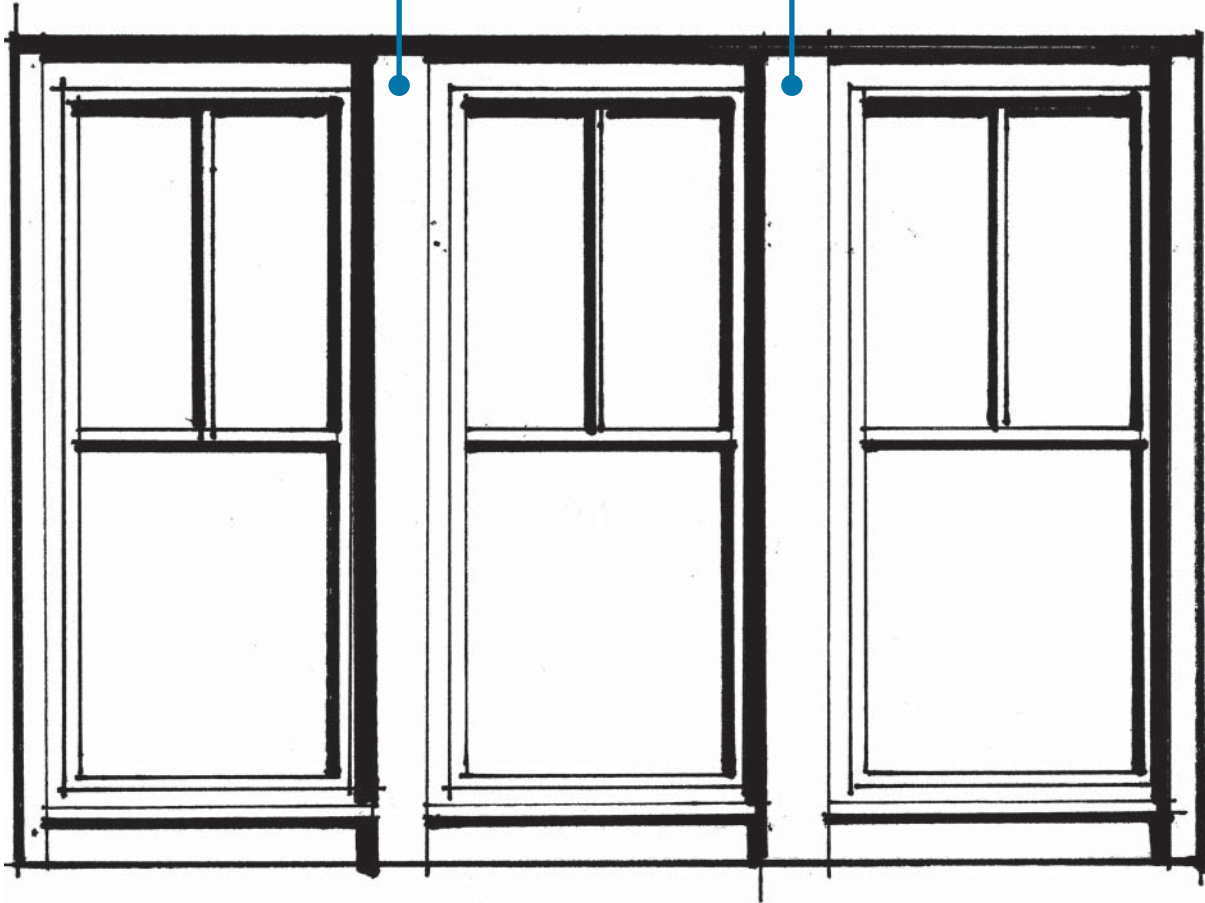


*When spanning elements are not shown, decorative features surround windows*

*Windows comprised of small lights with simple, often symmetrical, mullions*



*Windows are often grouped into large openings; stone or brick columns frequently divide individual windows*



# Traditional Row House

## Building Entry

Features shown in this section correspond to the Rockwood Design Standards found in Sections 7.0103(B)(3)(D) and 7.0503(1)(B)(5) (D). *Italicized elements are not required by the Design Standards but are provided for additional guidance.*

Primary entries of each unit, facing the street or an internal courtyard, establish order in the facade



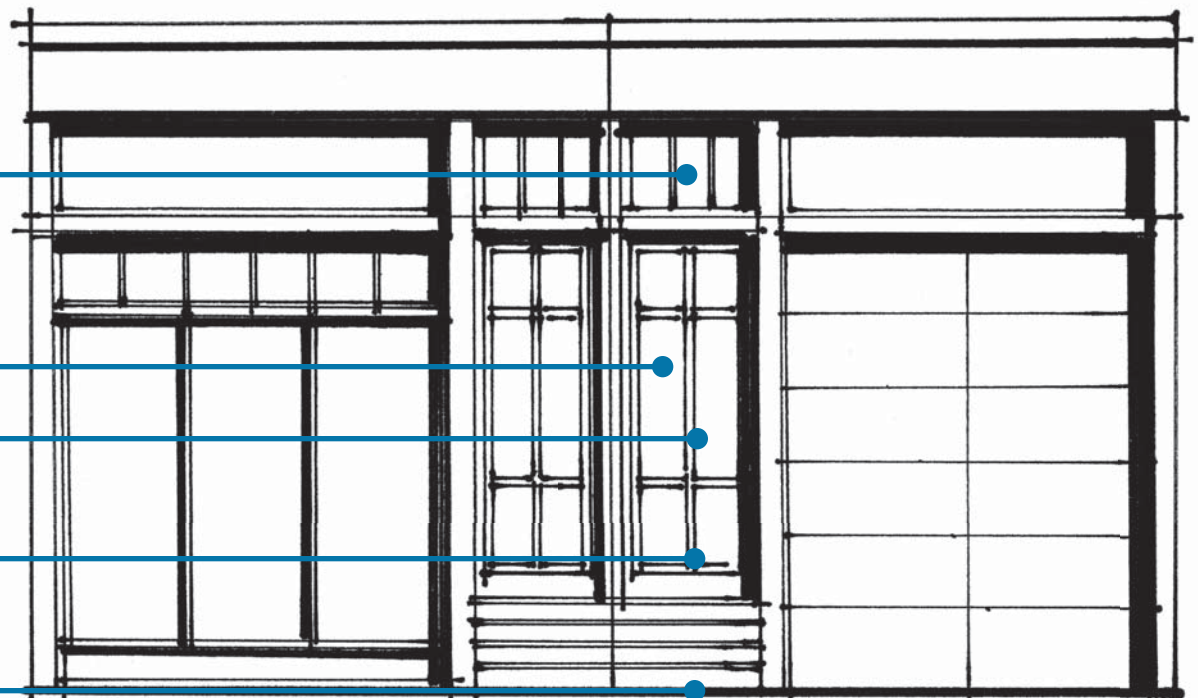
Ornamental glazing (transom) highlights the entry while adding natural light to the interior

Window in door adds detail and allows visibility outside from within

Recessed entry adds prominence

Doors are made of high-quality materials

Direct connection provided between entry and sidewalk



## Details

*Italicized features shown in this section do not correspond to the Rockwood Design Standards and are not required but are provided for additional guidance.*

### Medallion Example



### Awning and Canopy Examples



### Light Fixture Examples





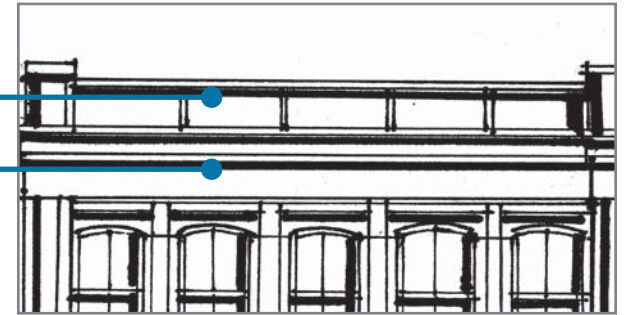
# Traditional Row House

## Roof Conditions

*Italicized features shown in this section do not correspond to the Rockwood Design Standards and are not required but are provided for additional guidance.*

*Decorative panels/terra cotta on cornice*

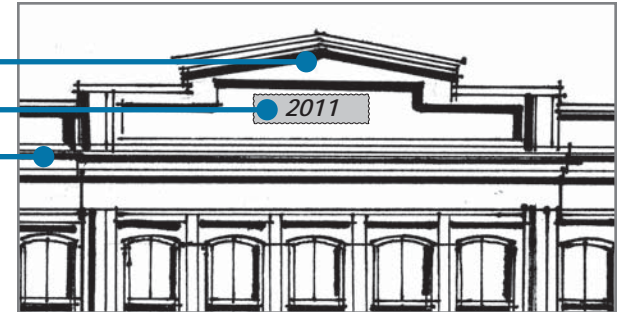
*Belt course above top story*



*Change of cornice form at important areas*

*Building plaque with name or year built*

*Pilasters extend through cornice*

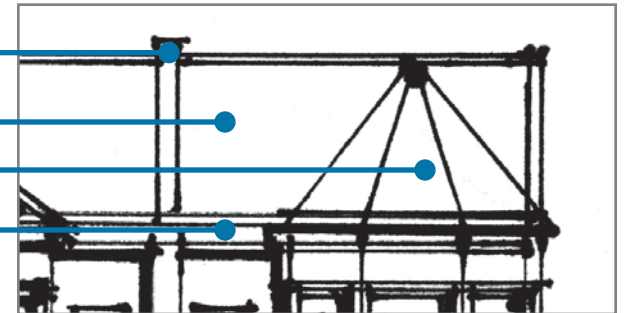


*Party wall often extends above roof*

*Steeply pitched roof*

*Bay windows reflected in roof*

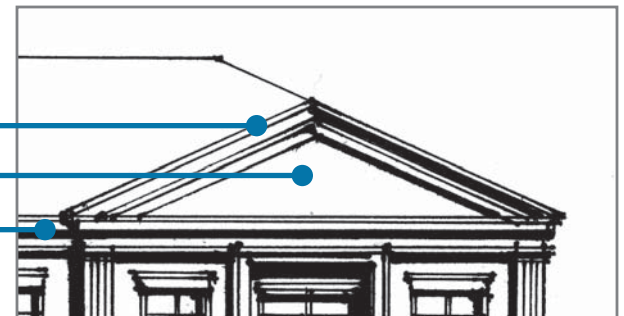
*Projected eave*



*Pediment enhanced with ornate molding*

*Change in roof form at projected bays*

*Highly detailed eave*



## Materials

Features shown in this section correspond to the Rockwood Design Standards found in Section 7.0503(1)(B)(7)(D). *Italicized elements are not required by the Design Standards but are provided for additional guidance.*

### Primary Materials

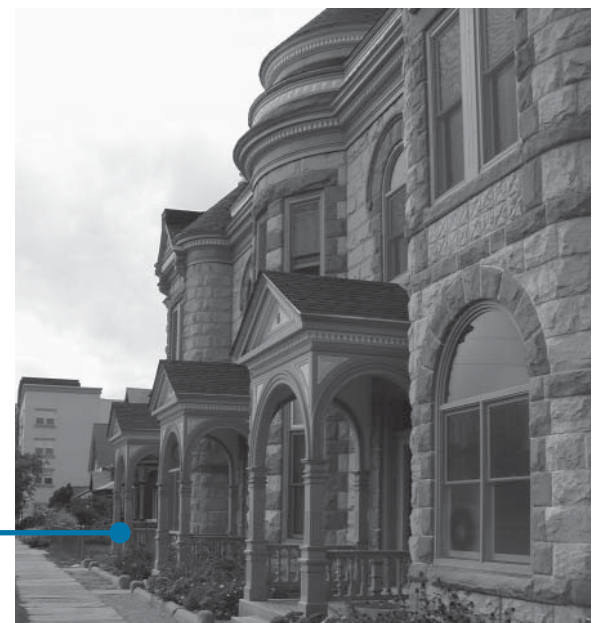
- Brick
- Stone

### Secondary and Accent Materials

- Ceramic Tile
- Terra Cotta
- Wood
- Metal (patina finish)

*Ornate brick details are frequently located above windows and at the cornice*

*Split stone details or facades are not uncommon in traditional buildings*



*Transitional Row House*



### *Fundamental Style Elements:*

- Building is subdivided horizontally into modules that respond to the individual unit.
- Building is subdivided vertically into base, middle and top sections.
- Facade has a tall ground floor with modestly detailed store fronts.
- Facade has parapet or roof elements that are simply composed.
- Ornamental elements are modestly incorporated.
- Entries and storefronts have simple framing details for window and door elements.
- Doors are tall and moderately detailed.
- Windows are proportioned to balance horizontal and vertical dimensions.
- Windows have simple framing elements.
- Rooflines emphasize sections of the facade with emphasis on the center.



I

F

C

Trad  
Trans  
Cont

M

Trad  
Trans  
Cont

R

Trad  
TRANS  
Cont

A

Trad  
Trans  
Cont

G

Trad  
Trans  
Cont

# Transitional Row House

## Facade Composition and Building Articulation

Features shown in this section correspond to the Rockwood Design Standards found in Sections 7.0103(B)(2)(D) and 7.0503(1)(B)(2)(D). *Italicized elements are not required by the Design Standards but are provided for additional guidance.*

Window groupings are used to visually divide the facade

Small changes in depth create distinction between units

*Lintels, flat arches and projected sills are used throughout the facade to unify its appearance*

Recessed window openings add depth and shadows to the facade; window trim is present on all doors and windows

*A series of belt courses above the ground floor differentiates the building base from upper stories*



## Ground Level Details

Features shown in this section correspond to the Rockwood Design Standards found in Sections 7.0103(B)(2)(D) and 7.0503(1)(B)(3)(D). *Italicized elements are not required by the Design Standards but are provided for additional guidance.*

Large windows create potential for studios or live/work units

Garage door matches character of other doors and windows



Ground level raised above grade

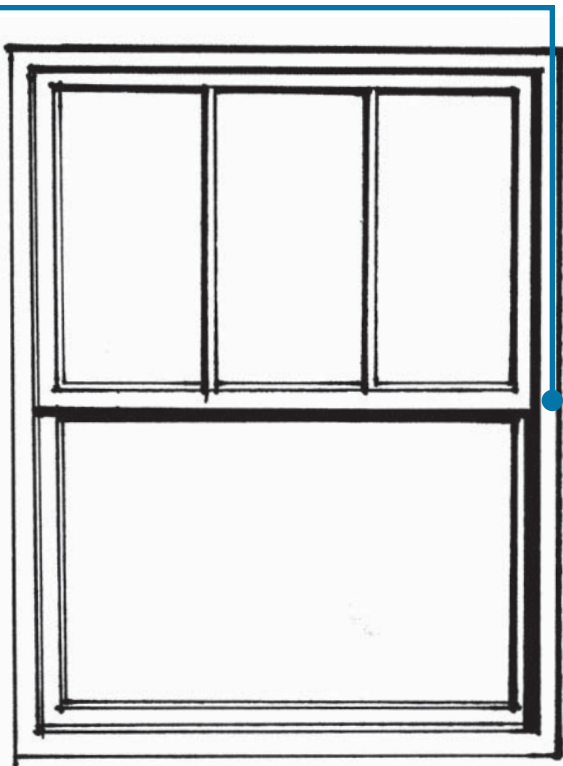
Landscape bed at building base or low fence/wall at property line defines space

# Transitional Row House

## Windows and Transparency

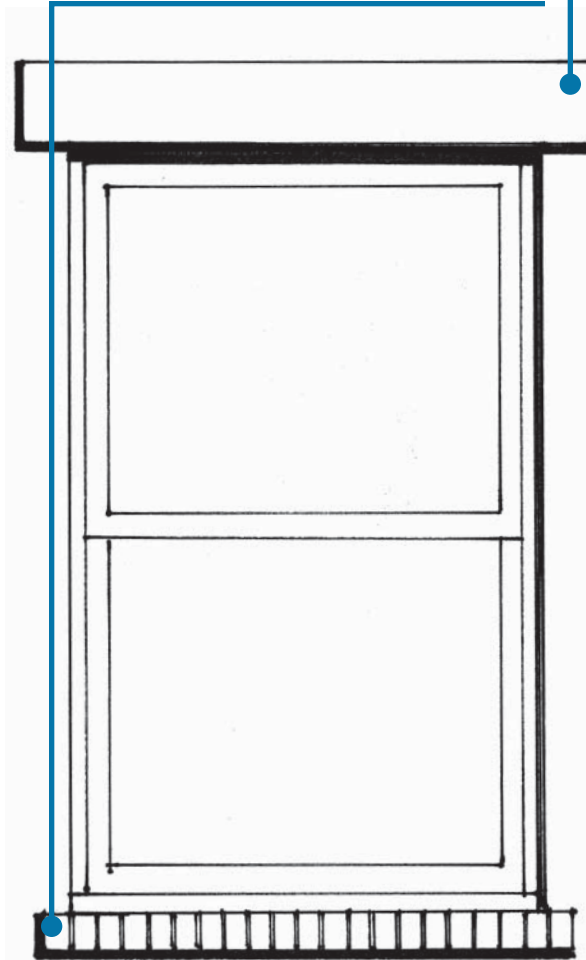
Features shown in this section correspond to the Rockwood Design Standards found in Sections 7.0103(B)(2)(D) and 7.0503(1)(B)(4)(D). *Italicized elements are not required by the Design Standards but are provided for additional guidance.*

Vertical proportions are typical *in windows*, though may become more square than the traditional style windows



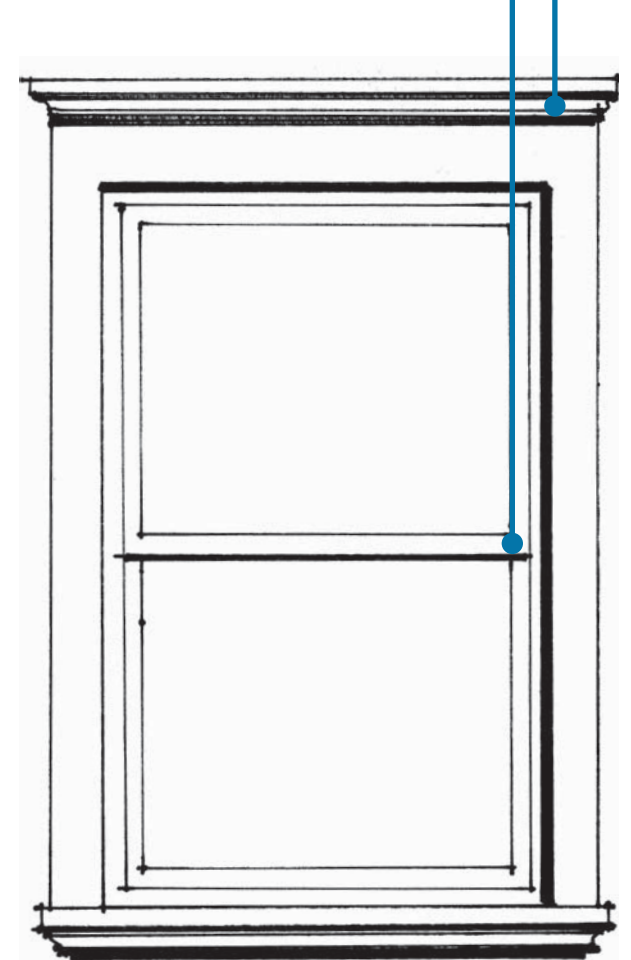
Windows show spanning element, such as stone lintel (shown); see Section 7.0503(1)(B)(2)(D) and 7.0503(1)(B)(3)(D)

Sills project from window and are typically visually distinct from surrounding wall; see Section 7.0503(1)(B)(3)(D)

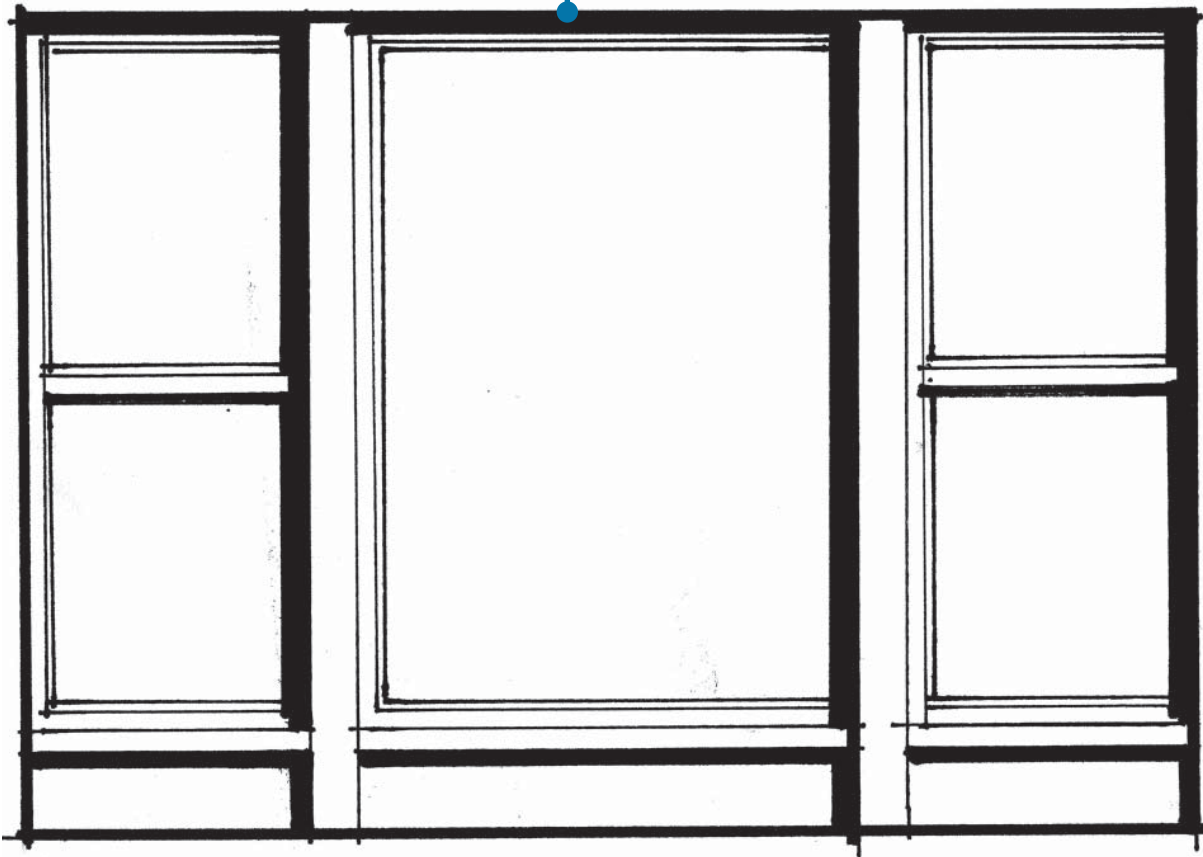


*When spanning elements are not shown, simple decorative features surround windows*

*Windows comprised of fewer, but often symmetrical, mullions*



*Chicago windows (a large fixed pane with operable windows on each side) are common in the transitional style*



I

F

C

Trad  
Trans  
Cont

M

Trad  
Trans  
Cont

R

Trad  
**TRANS**  
Cont

A

Trad  
Trans  
Cont

G

Trad  
Trans  
Cont



# Transitional Row House

## Building Entry

Features shown in this section correspond to the Rockwood Design Standards found in Sections 7.0103(B)(3)(D) and 7.0503(1)(B)(5) (D). *Italicized elements are not required by the Design Standards but are provided for additional guidance.*

Primary entries of each unit, facing the street or an internal courtyard, establish order in the facade



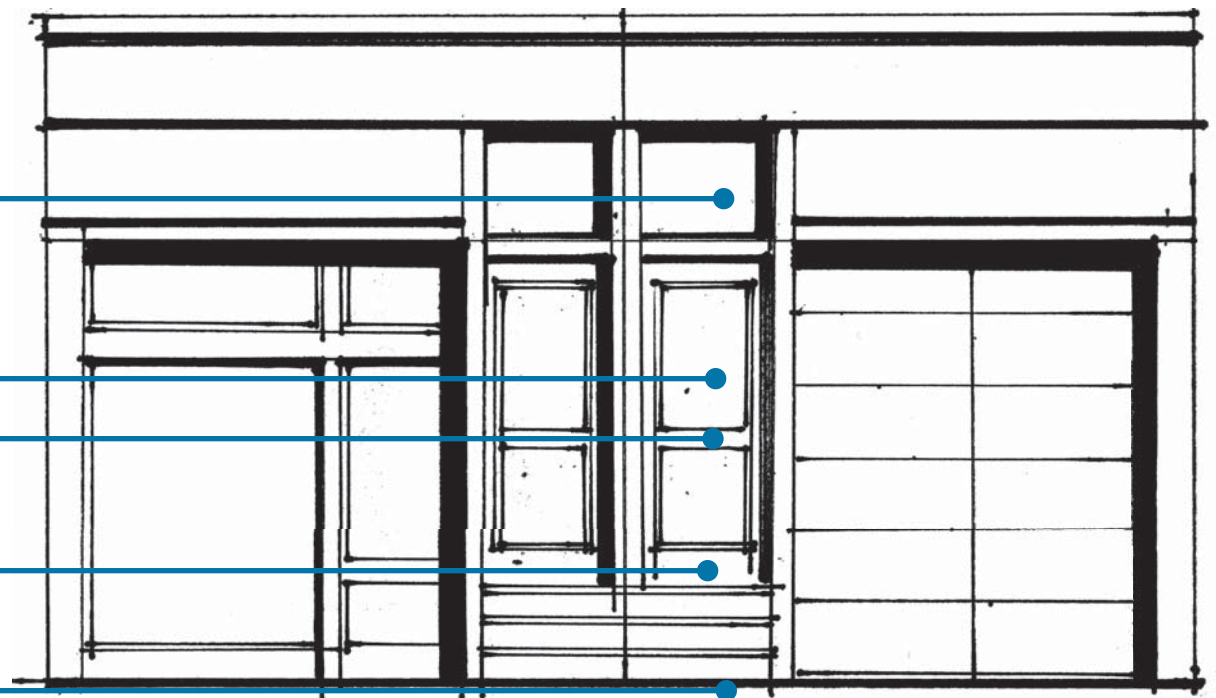
Ornamental glazing (transom) highlights the entry while adding natural light to the interior

Window in door adds detail and allows visibility outside from within

Recessed entry adds prominence

Doors made of high-quality materials

Direct connection provided between entry and sidewalk



## Details

*Italicized features shown in this section do not correspond to the Rockwood Design Standards and are not required but are provided for additional guidance.*

### Medallion Example



### Awning and Canopy Examples



### Light Fixture Examples



# Transitional Row House

## Roof Conditions

Features shown in this section do not correspond to the Rockwood Design Standards and are not required but are provided for additional guidance.

Belt course at top of cornice

Belt course above top story



Decorative brick patterns in cornice

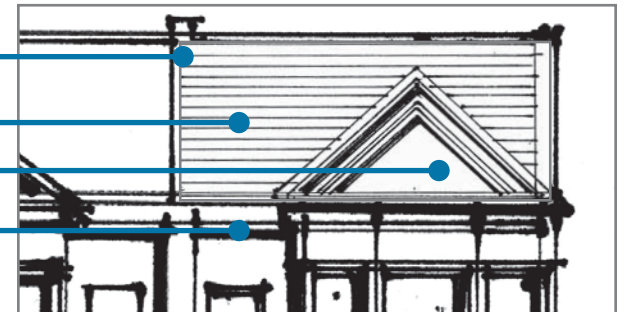


Party wall often extends above roof

Pitched roof

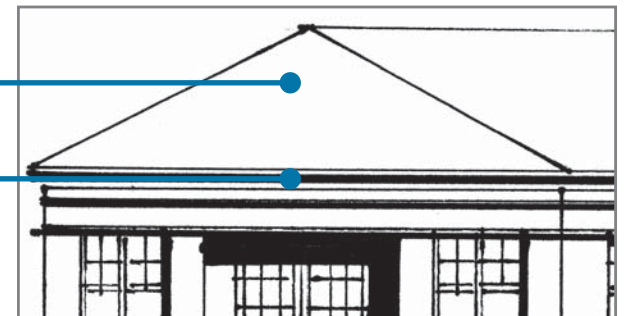
Dormer responds to bay windows

Projected eave



Change in roof form at projected bays

Simplified detail at eave



## Materials

Features shown in this section correspond to the Rockwood Design Standards found in Section 7.0503(1)(B)(7)(D). *Italicized elements are not required by the Design Standards but are provided for additional guidance.*

### Primary Materials

- Brick
- Stone

### Secondary and Accent Materials

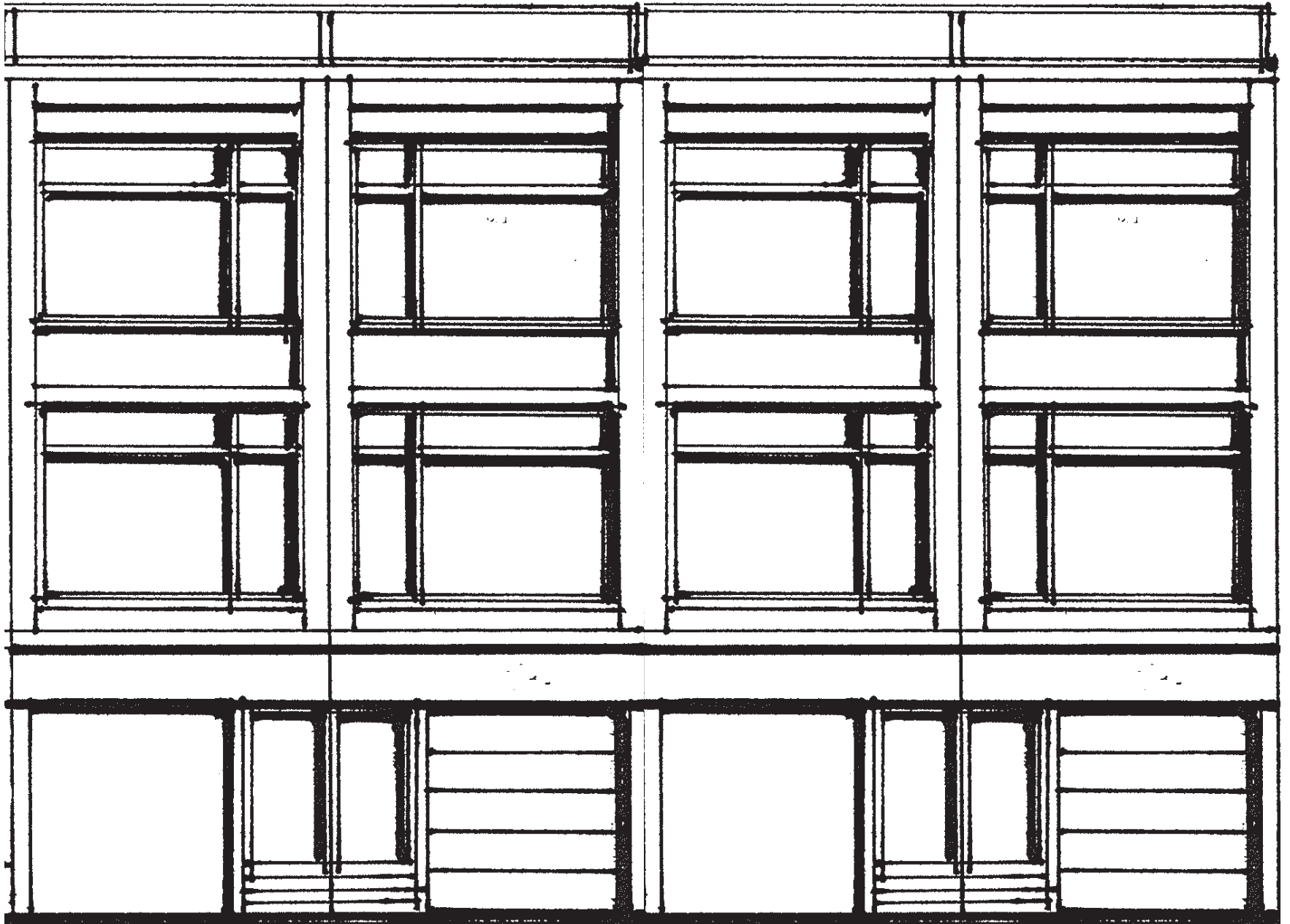
- Concrete Block
- Ceramic Tile
- Terra Cotta
- Wood
- Metal (patina finish)

*Brick details simplified but frequently used in transitional styles*

*Cut stone creates a finished character on facades*



*Contemporary Row House*



### *Fundamental Style Elements:*

- Building is subdivided horizontally into modules that respond to the individual unit.
- Facade has articulation in frames and recessed or projecting panels.
- Facade has horizontal articulation with continuous elements.
- Facade has tall ground floor.
- Ornamentation is very simple or absent.
- Building has flat or simple angled roof elements.
- Entries and windows have simple framing details for window and door elements.
- Projecting flat awnings are incorporated.
- Windows have large panes of glass.
- Windows may incorporate shading devices.
- Rooflines emphasize horizontality or special elements.



I

F

C

Trad  
Trans  
Cont

M

Trad  
Trans  
Cont

R

Trad  
Trans  
CONT

A

Trad  
Trans  
Cont

G

Trad  
Trans  
Cont

# Contemporary Row House

## Facade Composition and Building Articulation

Features shown in this section correspond to the Rockwood Design Standards found in Sections 7.0103(B)(2)(D) and 7.0503(1)(B)(2)(D). *Italicized elements are not required by the Design Standards but are provided for additional guidance.*

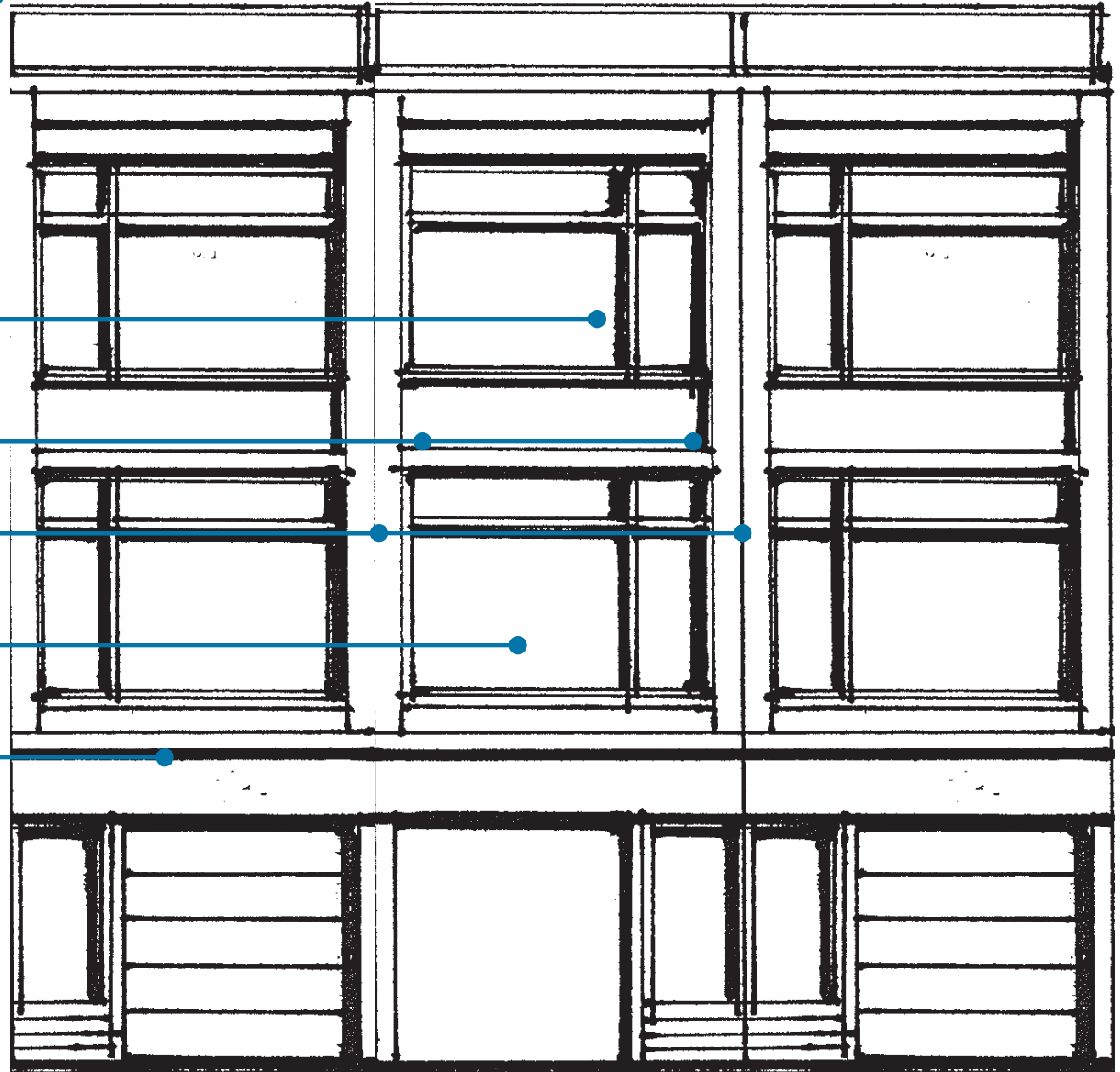
Large windows with asymmetrical mullions visually divide the facade

Small changes in depth between the pilasters and the wall create distinction between units

*Pilasters with scored center lines vertically organize the facade*

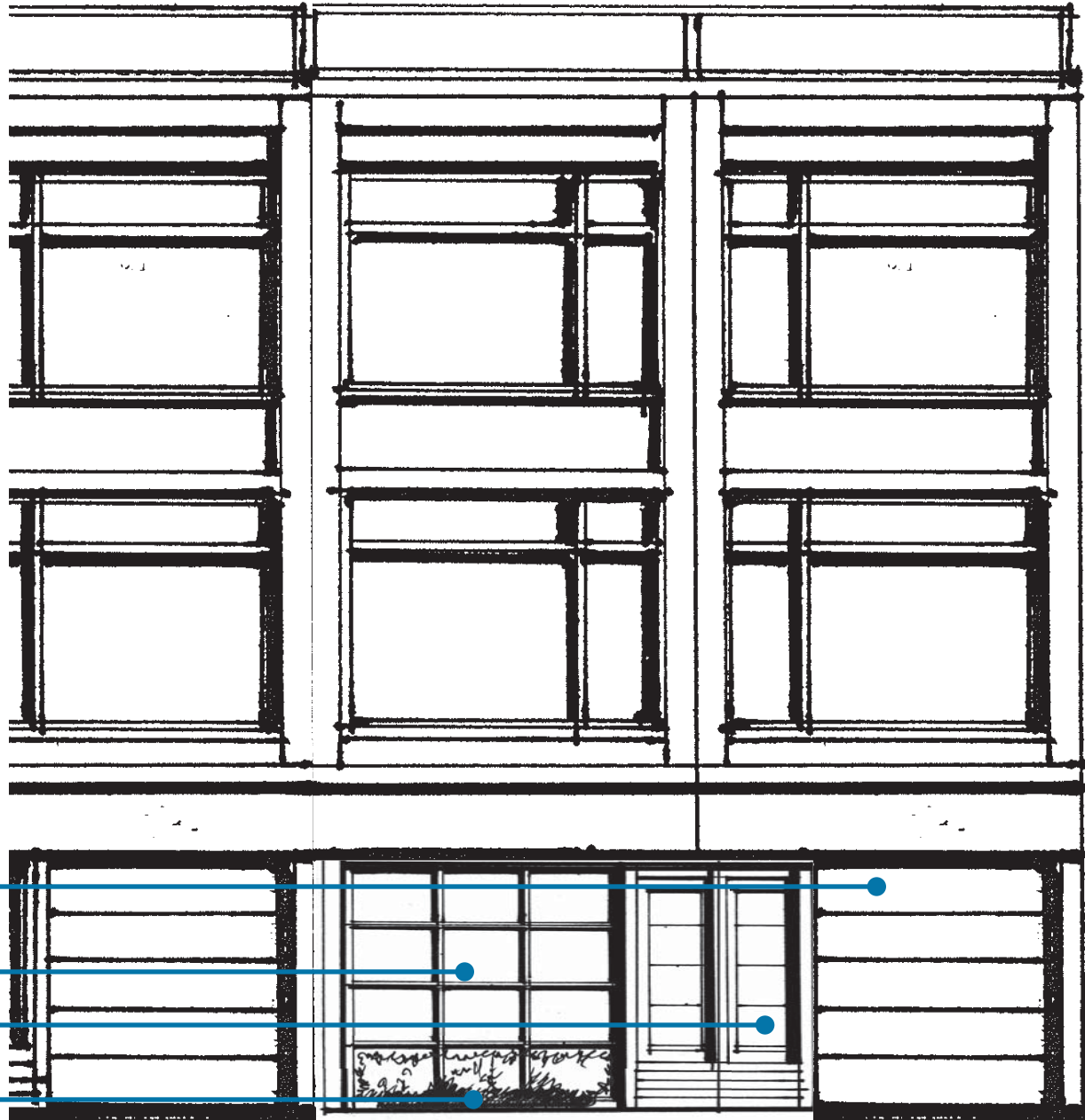
Recessed window openings add depth and shadows to the facade

*A series of belt courses above the ground floor differentiates the building base from upper stories*



## Ground Level Details

Features shown in this section correspond to the Rockwood Design Standards found in Sections 7.0103(B)(2)(D) and 7.0503(1)(B)(3)(D). *Italicized elements are not required by the Design Standards but are provided for additional guidance.*



Garage door matches character of other doors and windows

Large windows create potential for studios or live/work units

Ground level raised above grade

Landscape bed at building base or low fence/wall at property line defines space

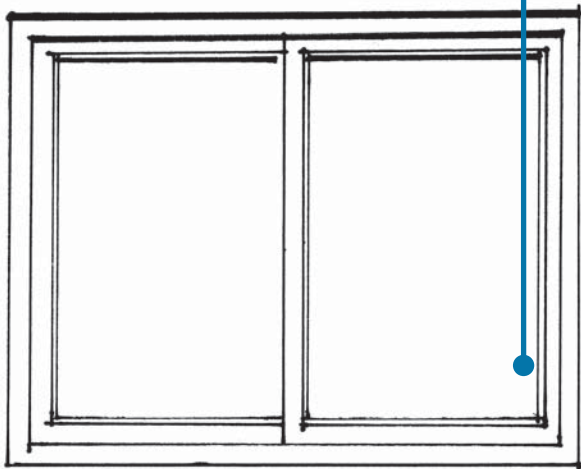


# Contemporary Row House

## Windows and Transparency

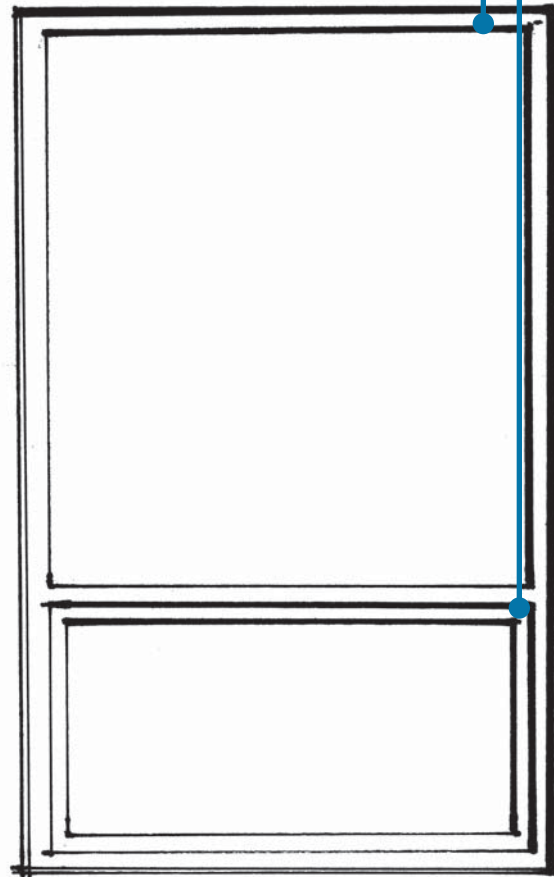
Features shown in this section correspond to the Rockwood Design Standards found in Sections 7.0103(B)(2)(D) and 7.0503(1)(B)(4) (D). *Italicized elements are not required by the Design Standards but are provided for additional guidance.*

Greater variety in proportion; window openings may be horizontal but should not create horizontal geometry in the facade

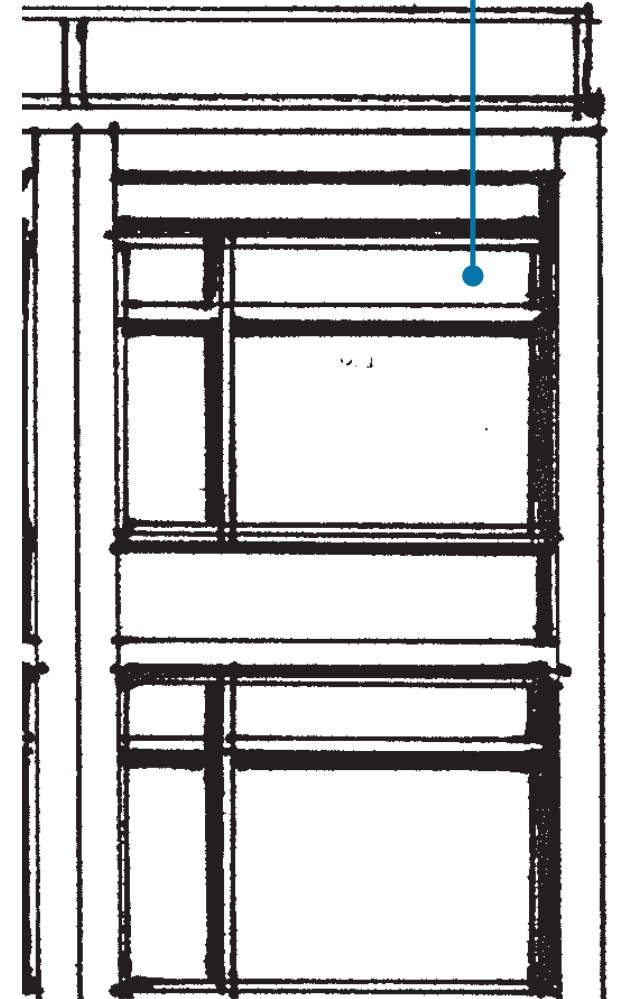


Window mullions often asymmetrical

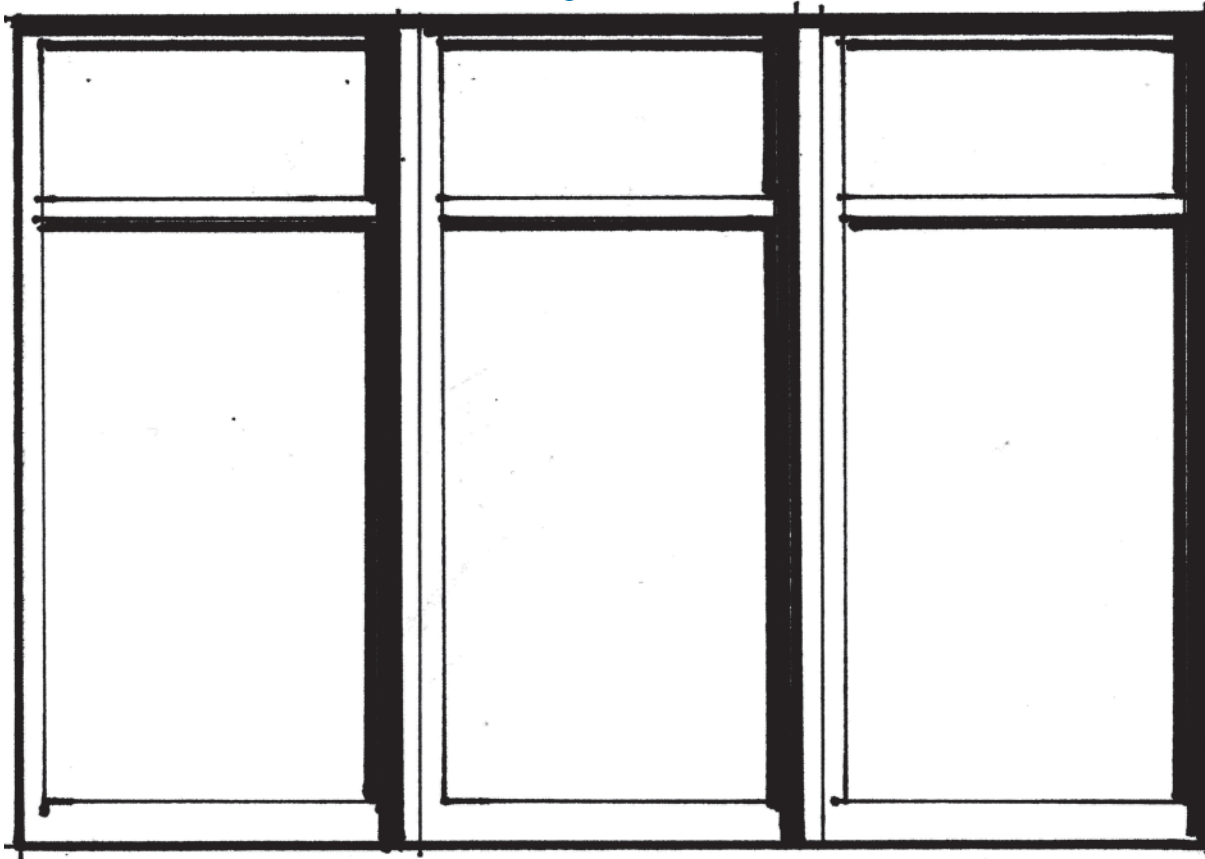
No visible spanning element; window may appear "punched" through wall



Windows often comprise the majority of the facade



*Window groupings often incorporate asymmetrical patterns*

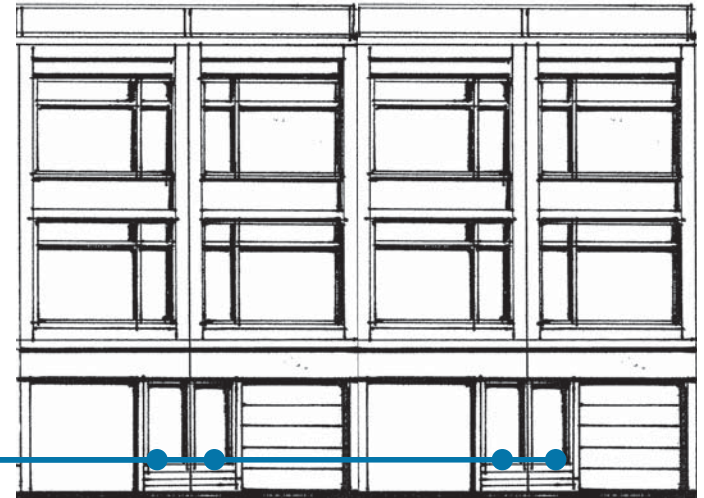


# Contemporary Row House

## Building Entry

Features shown in this section correspond to the Rockwood Design Standards found in Sections 7.0103(B)(3)(D) and 7.0503(1)(B)(5) (D). *Italicized elements are not required by the Design Standards but are provided for additional guidance.*

Primary entries of each unit, facing the street or an internal courtyard, establish order in the facade

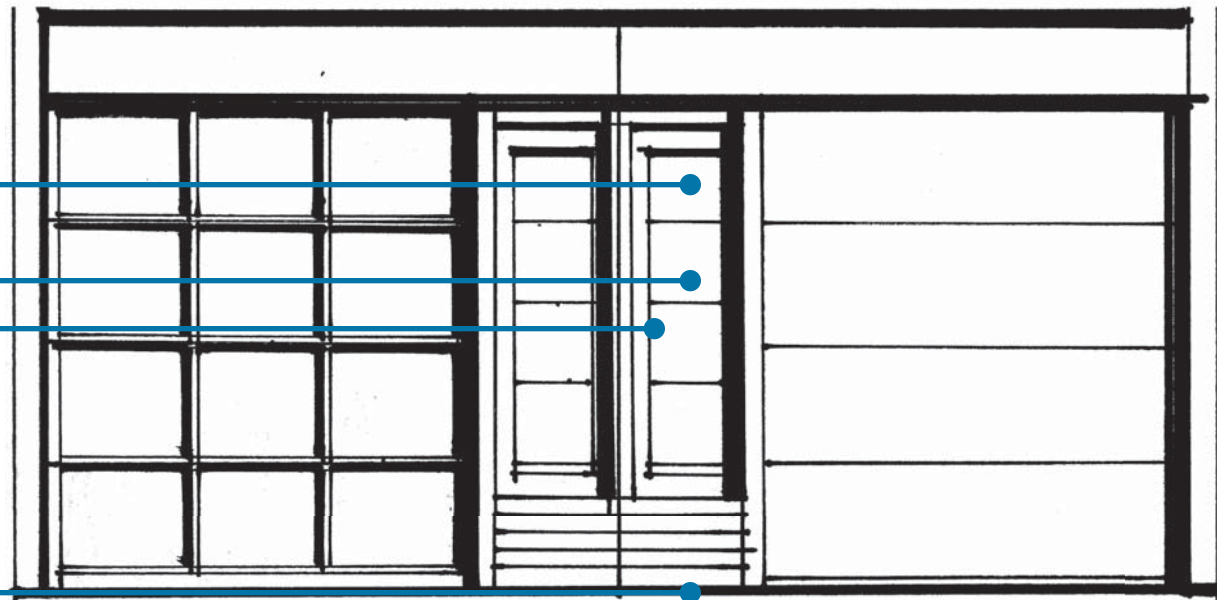


Recessed entry adds prominence

Window in door adds detail and allows visibility outside from within

Doors made of high-quality materials

Direct connection provided between entry and sidewalk



## Details

*Italicized features shown in this section do not correspond to the Rockwood Design Standards and are not required but are provided for additional guidance.*

### *Awning and Canopy Examples*



### *Light Fixture Examples*



# Contemporary Row House

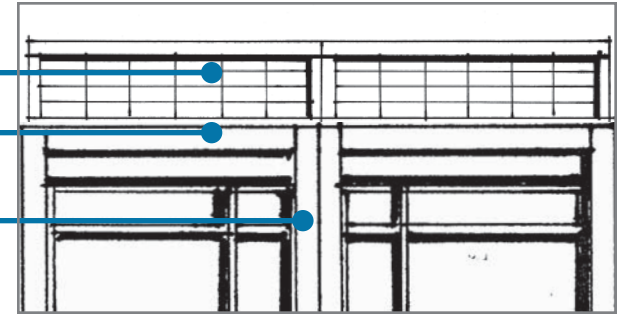
## Roof Conditions

*Italicized features shown in this section do not correspond to the Rockwood Design Standards and are not required but are provided for additional guidance.*

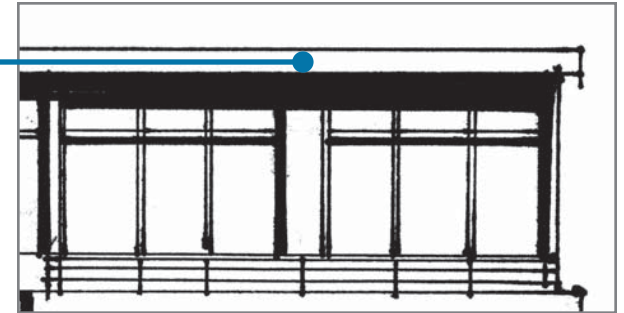
*Simple geometric pattern or railing on parapet*

*Belt course above top story*

*Columns expressed into parapet*

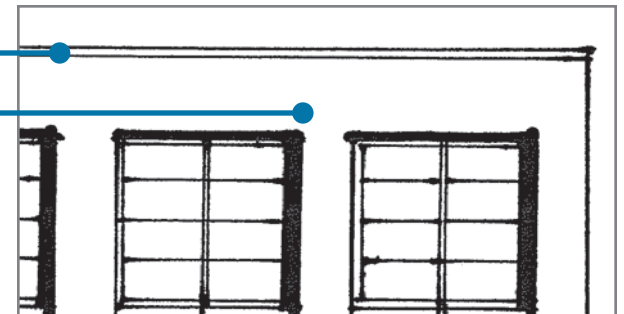


*Projected roof extends beyond the wall plane*



*Small belt course at parapet edge*

*Simple parapet, no cornice*



## Materials

Features shown in this section correspond to the Rockwood Design Standards found in Section 7.0503(1)(B)(7)(D). *Italicized elements are not required by the Design Standards but are provided for additional guidance.*

### Primary Materials

- Stone
- Glass
- Stucco
- Brick

### Secondary and Accent Materials

- Precast or poured in place concrete
- Metals

*Simplistic details, primarily reveals, express nature of materials*

*Stone frequently cut and polished for clean appearance*

