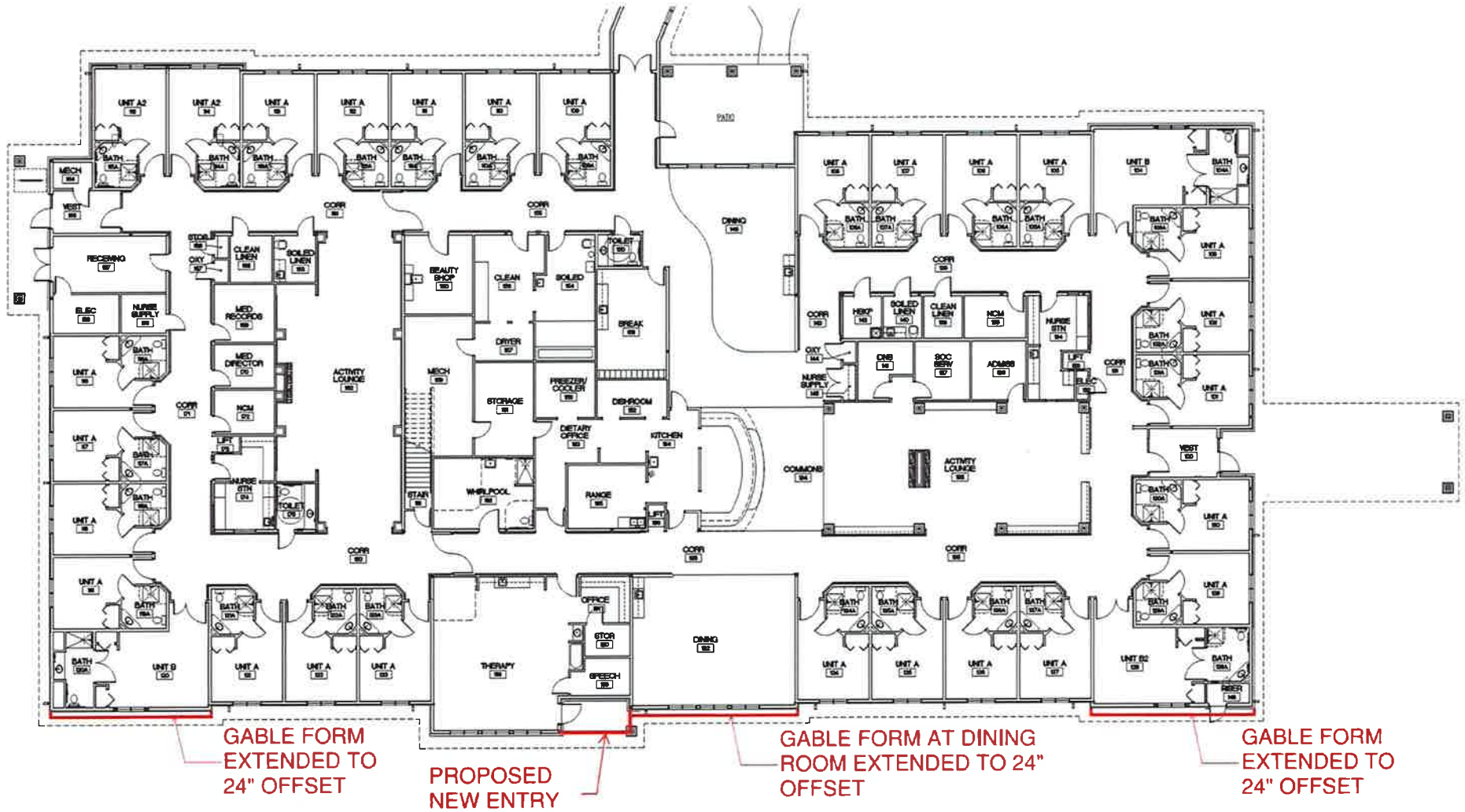


FLOOR PLAN

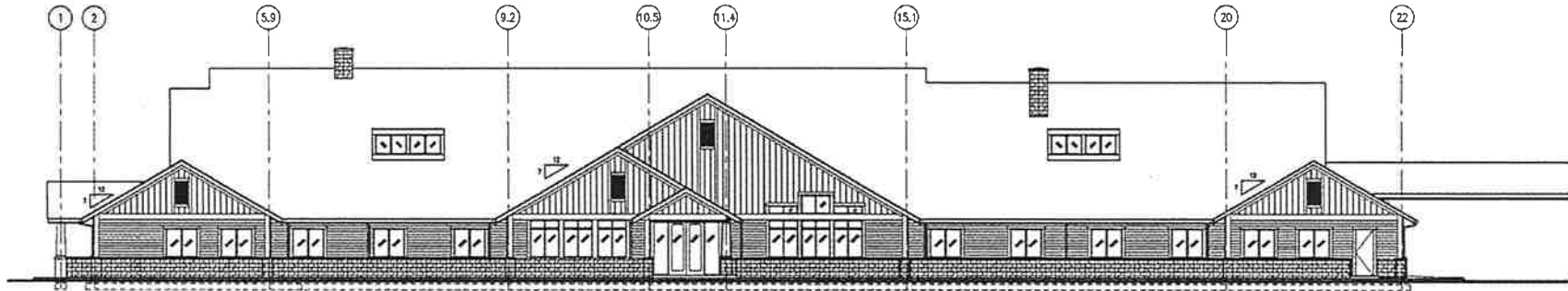


A-101

Fairlawn Village Skilled Care Facility Expansion
3457 NE Division Street
Gresham, OR

Gresham Design Commission
City of Gresham 05.02.18

STREET FACING ELEVATION

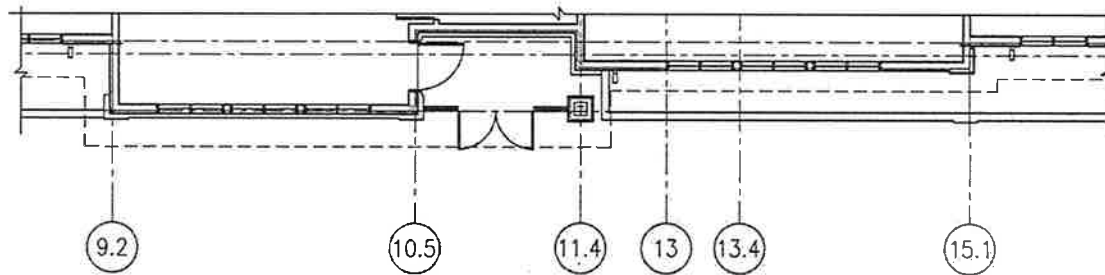
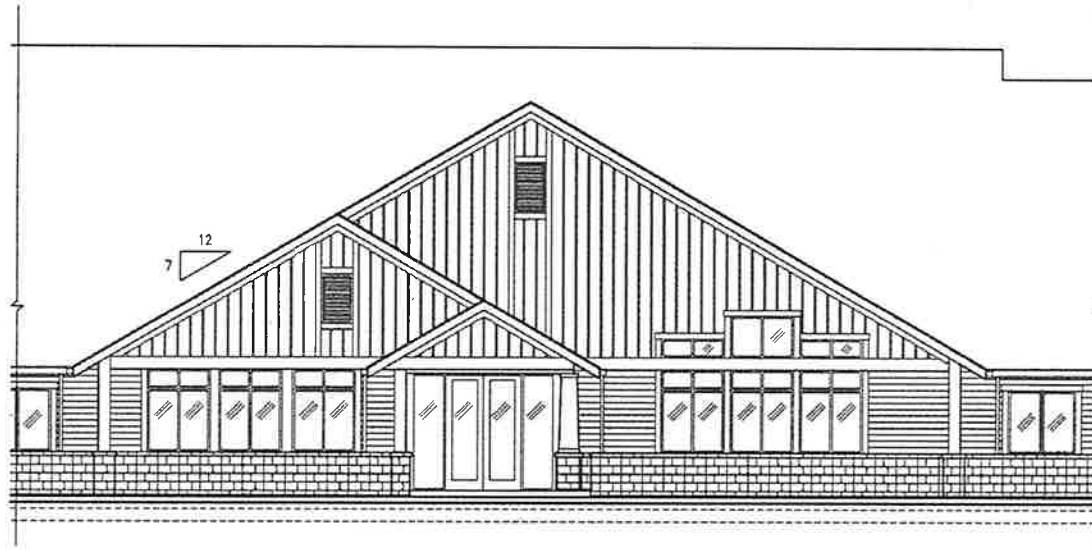


WEST END
A-201

Fairlawn Village Skilled Care Facility Expansion
3457 NE Division Street
Gresham, OR

Gresham Design Commission
City of Gresham 05.02.18

REVISED ELEVATION & PLAN

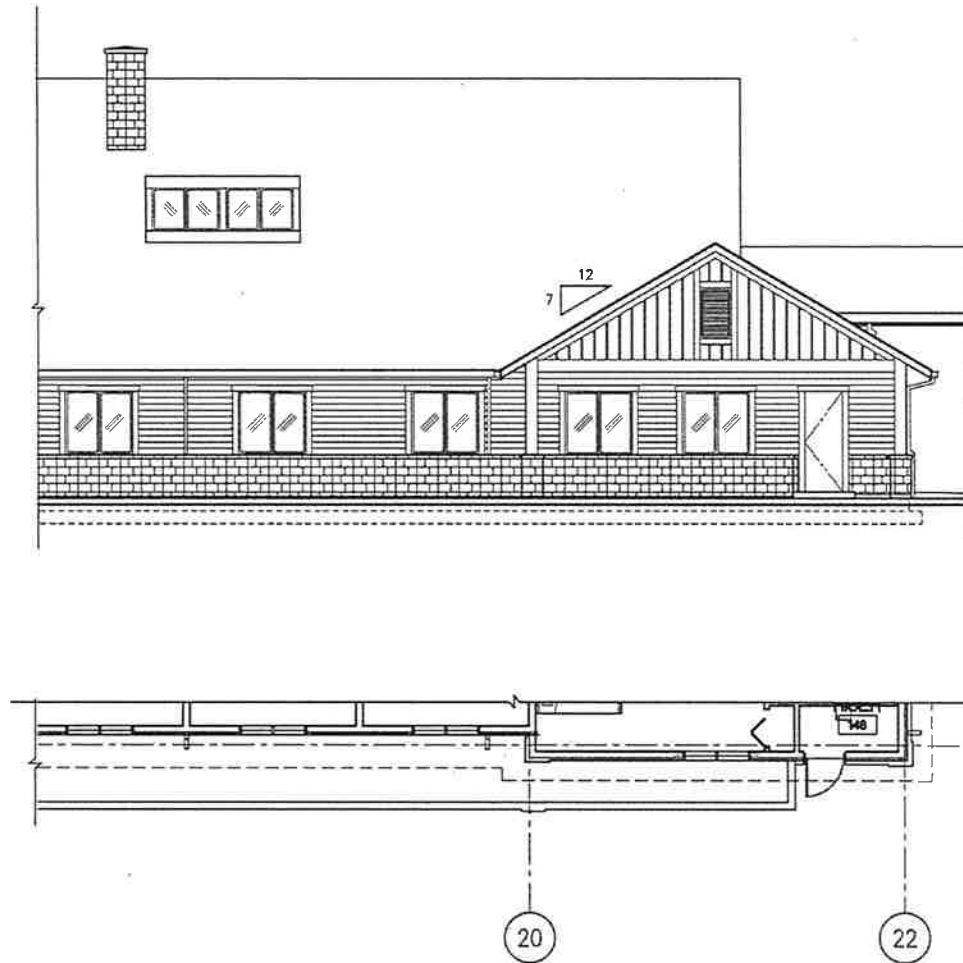


ENTRY

Fairlawn Village Skilled Care Facility Expansion
3457 NE Division Street
Gresham, OR

Gresham Design Commission
City of Gresham 05.02.18

REVISED ELEVATION & PLAN

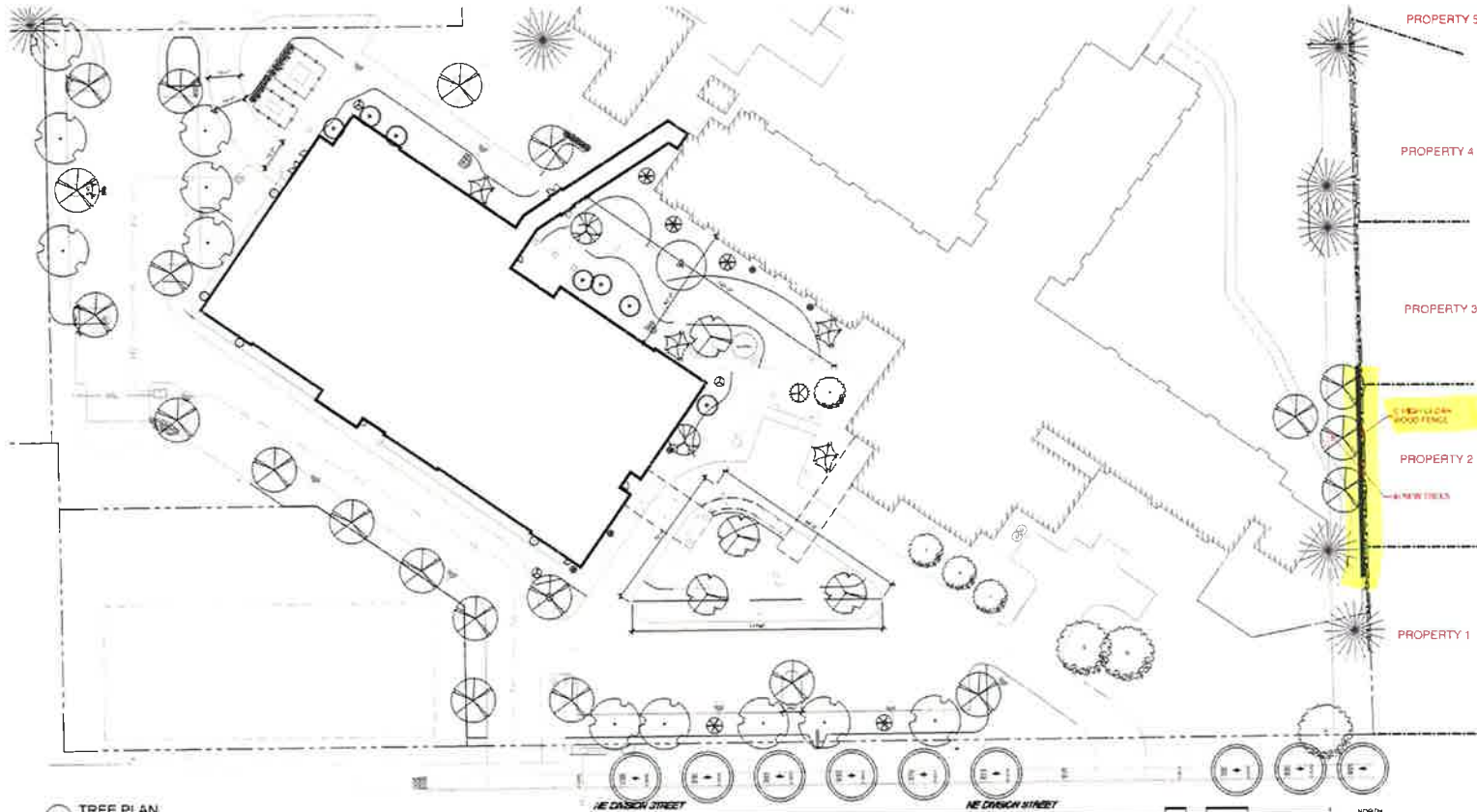


EAST END

Fairlawn Village Skilled Care Facility Expansion
3457 NE Division Street
Gresham, OR

Gresham Design Commission
City of Gresham 05.02.18

ADJACENT PROPERTIES



1 TREE PLAN

TREE LEGEND

TREE SYMBOL	QTY	SIZE	TYPE
	4	5-6"	DBB SPECIMEN
	8	2" - 4.8" DB	
	1	3-4" DB HT.	3 TULIP TREE
	5	1-2" DB HT.	DBB
	21	1-2" DB HT.	DBB
	2	2" CAL	DBB
	11	1-2" DB HT.	4 DBB HT.
	25	1-2" DB HT.	DBB
	1	1-2" DB HT.	DBB
	4	2" CAL	DBB
	3	1-2" DB HT.	DBB

LANDSCAPE NOTES

- LANDSCAPE CONTRACTOR SHALL SEE SPECIFICATIONS FOR ADDITIONAL REQUIREMENTS.
- ALL LANDSCAPING SHALL BE INSTALLED ACCORDING TO ACCEPTED BEST INDUSTRY STANDARDS FOR PLANTING PROCEDURES.
- PLANT MATERIALS SHALL BE OF HIGH GRADE, AND SHALL MEET THE QUALITY AND SIZE STANDARDS FOR NURSERY STOCK.
- PLANTINGS SHALL BE INSTALLED BETWEEN FEBRUARY 1st AND MAY 1st OR BETWEEN OCTOBER 1st AND NOVEMBER 1st. SEE SPECIFICATIONS FOR ADDITIONAL REQUIREMENTS.
- PLANTINGS SHALL BE MULCHED TO A MINIMUM DEPTH OF 2 INCHES AND 18 INCHES IN DIAMETER.
- PLANT QUANTITIES SHOWN IN PLANS TAKE PRECEDENCE OVER QUANTITIES LISTED IN LEGEND.
- PLANTS INDICATED AS SPECIMEN ARE TO BE HAND SELECTED BY LANDSCAPE ARCHITECT.
- LANDSCAPE SHALL COMPLY WITH CITY OF GRESHAM CODE AT TIME OF BUILDING PERMIT.

PARKING LOT TREE CALCULATIONS

- 1 TREE REQUIRED FOR EVERY 9 PARKING SPACES
- 43 PARKING SPACES PROVIDED MINIMUM TREES
- 4 TREES REQUIRED (1 IS PROVIDED)

HARDSCAPE SHADING CALCULATIONS

- 1 TREE COVERAGE FOR HARDSCAPE SHADING AFTER 1 YEAR:
TOTAL HARDSCAPE ON SITE = 45,331 SF
TOTAL SHADED AREA ON SITE = 8,508
8,508 / 45,331 * 100 = 18.76% coverage

L3.0

Fairlawn Village Skilled Care Facility Expansion
3457 NE Division Street
Gresham, OR

Gresham Design Commission
City of Gresham 05.02.18

PROPOSED BUFFER TREATMENT



PROPOSED 6' HIGH CEDAR FENCE
AND 4 TREES TO BE ADDED

Fairlawn Village Skilled Care Facility Expansion
3457 NE Division Street
Gresham, OR

Gresham Design Commission
City of Gresham 05.02.18