

**GENERAL NOTES:**

- A. INFORMATION ILLUSTRATED ON ARCHITECTURAL SITE PLAN INTENDED FOR BUILDING PLACEMENT ONLY. REFER TO OTHER PROJECT CONSULTANTS FOR ADDITIONAL INFORMATION.
- B. LIMITS OF WORK ARE DEFINED WITHIN PROJECT BOUNDARY (PROPERTY) LINES AND ADJACENT RIGHT OF WAY.
- C. FINISH FLOOR ELEVATION AND SITE CONTROL (DATUM POINT) IS BASED ON SURVEY INFORMATION PROVIDED BY OWNER

**KEYNOTES:**

**LEGEND:**

- DEDICATED PROPERTY LINE
- R.O.W. DEDICATION
- ENTRY
- DATUM POINT (BENCH MARK)

**PRELIMINARY  
NOT FOR  
CONSTRUCTION**

**CARLETON HART ARCHITECTURE P.C.**  
 630 SW 10th Avenue #200 Portland Oregon 97205  
 503.243.2252 | www.carletonhart.com

**RKM LIFEWORKS**  
 18428 SE PINE STREET  
 GRESHAM, OREGON  
 DESIGN REVIEW

SITE PLAN  
 PROJECT NO.  
 PAM 17-26000460  
 JANUARY 18, 2018

REVISIONS:

**1 SITE PLAN**  
 SCALE: 1" = 10'-0"

NOTE: DRAWINGS ARE AT HALF SCALE WHEN PRINTED AT 11X17  
 COPYRIGHT - CARLETON HART ARCHITECTURE DO NOT REPRODUCE WITHOUT PERMISSION

MATERIALS SCHEDULE		
MATERIAL	QUANTITY	DETAIL
① CONCRETE SEATBENCH	334 L.F.	DETAIL 2, SHEET L4.01
② SCORED CONCRETE PAVING	2,125 S.F.	DETAIL 1+2, SHEET L4.02
③ GOOD NEIGHBOR FENCE	334 L.F.	DETAIL 1, SHEET L4.01
④ GRAVEL PAVING	812 S.F.	DETAIL 3, SHEET L4.02
⑤ BIKE RACKS	2	DETAIL 3, SHEET L4.01

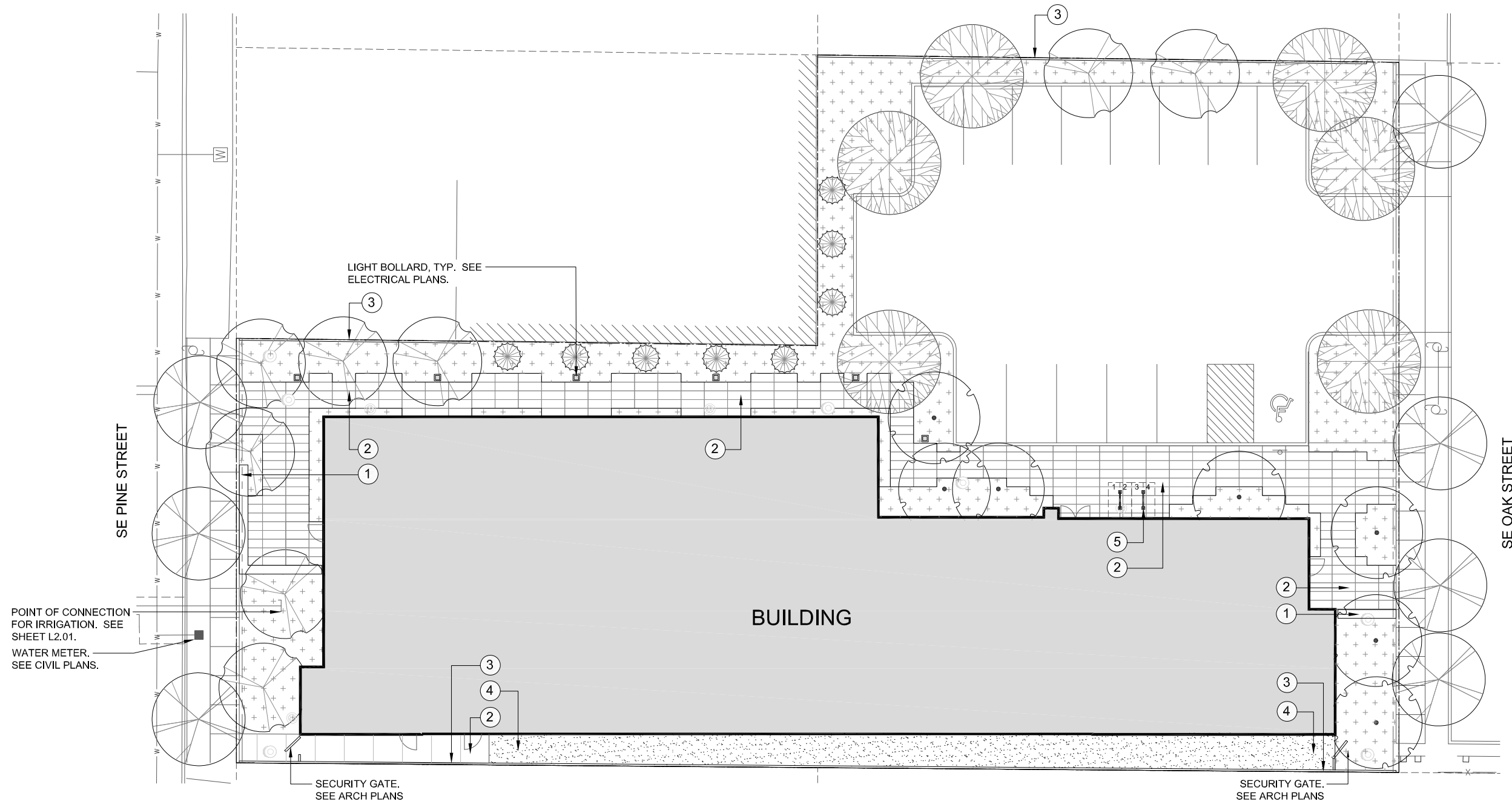
LEGEND			
PROPERTY LINE		PLANTING AREA (3,389 S.F.)	
SCORED CONCRETE PAVING		PROPOSED TREES (SEE PLANTING LEGEND L3.03)	
CONCRETE SEATBENCH		EXISTING TREES	
BIKE RACKS			

**NOTES**

- ALL CUTSHEETS OF MATERIALS SHALL BE SUBMITTED TO LANDSCAPE ARCHITECT FOR APPROVAL PER SPECIFICATIONS.
- LAYOUT OF PAVING, SEATBENCHES, LOCATIONS OF FENCE, AND SITE FURNISHINGS SHALL BE APPROVED BY LANDSCAPE ARCHITECT BEFORE INSTALLATION COMMENCES.
- FOR LIGHTING PLANS AND SPECS SEE ELECTRICAL.
- FOR SITE GRADING SEE CIVIL PLANS.

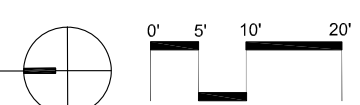
PRELIMINARY  
NOT FOR  
CONSTRUCTION

**CARLETON HART ARCHITECTURE P.C.**  
 830 SW 10th Avenue #200 Portland Oregon 97205  
 503.243.2252  
 www.carletonhart.com



**LAYOUT/MATERIALS PLAN**

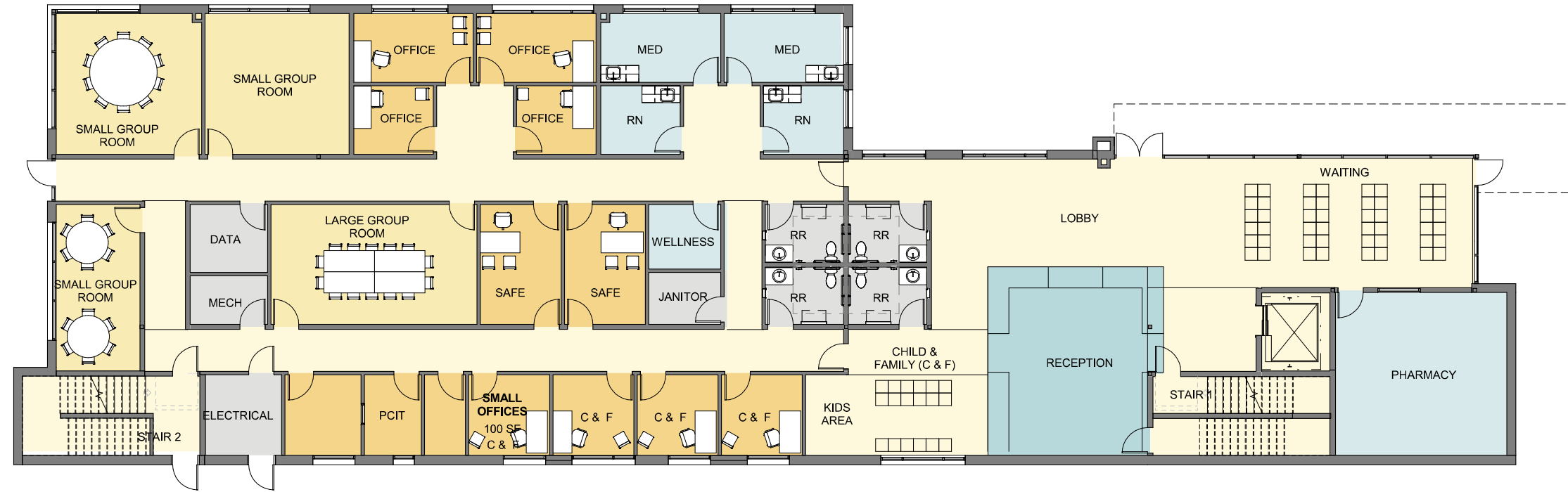
SCALE: 1" = 10'-0"



NOTE: DRAWINGS ARE AT HALF SCALE WHEN PRINTED AT 11X17  
 COPYRIGHT © CARLETON HART ARCHITECTURE DO NOT REPRODUCE WITHOUT PERMISSION

**RKM LIFEWORKS**  
 18428 SE PINE STREET  
 GRESHAM, OREGON  
 DESIGN DEVELOPMENT

LAYOUT/MATERIALS  
PLAN  
 PROJECT NO.  
17002  
 JANUARY 18, 2018  
 REVISIONS:



**1 FIRST FLOOR PLAN**  
SCALE: 1/8" = 1'-0"



GENERAL NOTES	KEYNOTES	LEGEND
		<ul style="list-style-type: none"> <li><span style="display: inline-block; width: 15px; height: 10px; background-color: #ADD8E6; border: 1px solid black; margin-right: 5px;"></span> STAFF COMMONS</li> <li><span style="display: inline-block; width: 15px; height: 10px; background-color: #ADD8E6; border: 1px solid black; margin-right: 5px;"></span> MEDICAL OFFICES</li> <li><span style="display: inline-block; width: 15px; height: 10px; background-color: #FFD700; border: 1px solid black; margin-right: 5px;"></span> OFFICES</li> <li><span style="display: inline-block; width: 15px; height: 10px; background-color: #FFD700; border: 1px solid black; margin-right: 5px;"></span> GROUP ROOMS</li> <li><span style="display: inline-block; width: 15px; height: 10px; background-color: #FFFACD; border: 1px solid black; margin-right: 5px;"></span> CIRCULATION</li> <li><span style="display: inline-block; width: 15px; height: 10px; background-color: #A9A9A9; border: 1px solid black; margin-right: 5px;"></span> UTILITIES</li> </ul>

FIRST FLOOR PLAN

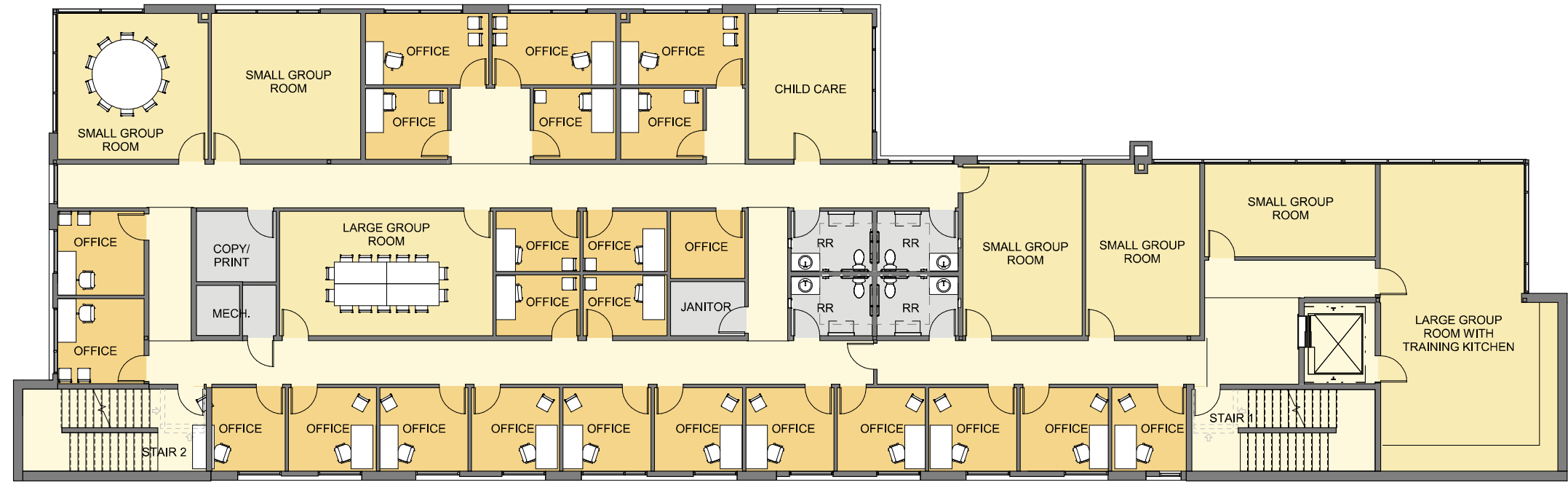
PROJECT NO.  
PAM 17-26000460

JANUARY 18, 2018

REVISIONS:

NOTE: DRAWINGS ARE AT HALF SCALE WHEN PRINTED AT 11X17  
COPYRIGHT - CARLETON HART ARCHITECTURE. DO NOT REPRODUCE WITHOUT PERMISSION

**RKM LIFEWORKS**  
18428 SE PINE STREET  
GRESHAM, OREGON  
DESIGN REVIEW



RKM LIFEWORKS  
18428 SE PINE STREET  
GRESHAM, OREGON  
DESIGN REVIEW

1 SECOND FLOOR PLAN  
SCALE: 1/8" = 1'-0"



SECOND FLOOR PLAN

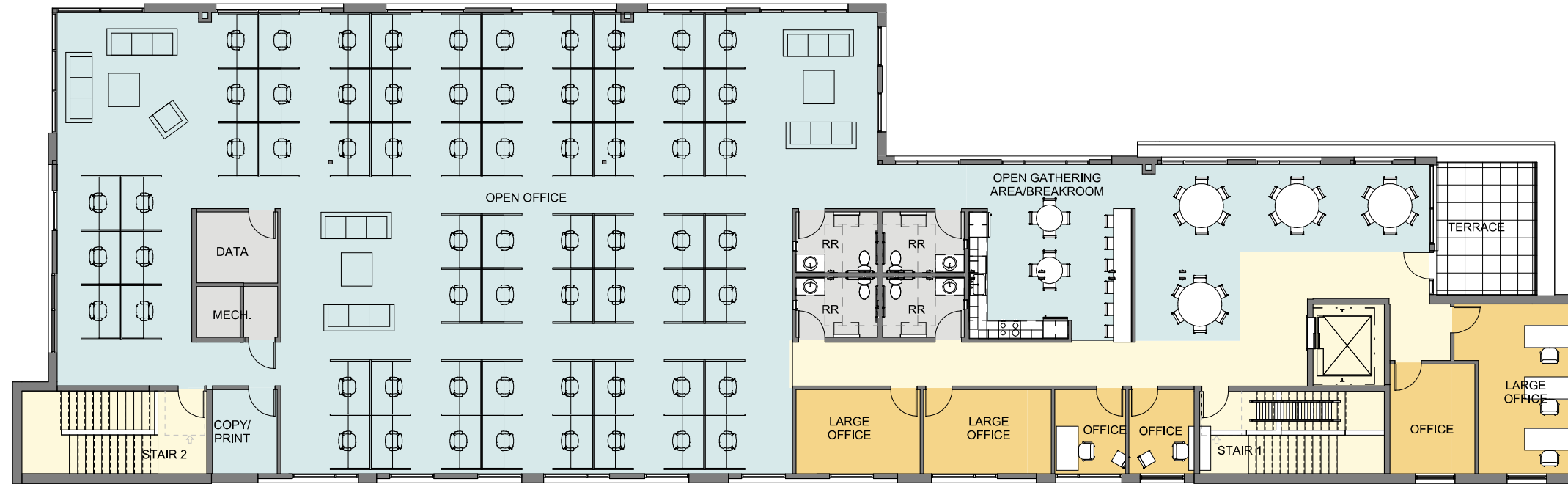
PROJECT NO.  
PAM 17-26000460

JANUARY 18, 2018

REVISIONS:

GENERAL NOTES	KEYNOTES	LEGEND
		<ul style="list-style-type: none"> <li><span style="display: inline-block; width: 20px; height: 10px; background-color: #ADD8E6; border: 1px solid black; margin-right: 5px;"></span> STAFF COMMONS</li> <li><span style="display: inline-block; width: 20px; height: 10px; background-color: #ADD8E6; border: 1px solid black; margin-right: 5px;"></span> MEDICAL OFFICES</li> <li><span style="display: inline-block; width: 20px; height: 10px; background-color: #FFD700; border: 1px solid black; margin-right: 5px;"></span> OFFICES</li> <li><span style="display: inline-block; width: 20px; height: 10px; background-color: #FFD700; border: 1px solid black; margin-right: 5px;"></span> GROUP ROOMS</li> <li><span style="display: inline-block; width: 20px; height: 10px; background-color: #FFFACD; border: 1px solid black; margin-right: 5px;"></span> CIRCULATION</li> <li><span style="display: inline-block; width: 20px; height: 10px; background-color: #A9A9A9; border: 1px solid black; margin-right: 5px;"></span> UTILITIES</li> </ul>

NOTE: DRAWINGS ARE AT HALF SCALE WHEN PRINTED AT 11X17  
COPYRIGHT-CARLETON HART ARCHITECTURE DO NOT REPRODUCE WITHOUT PERMISSION



1 THIRD FLOOR PLAN  
SCALE: 1/8" = 1'-0"



RKM LIFEWORKS  
18428 SE PINE STREET  
GRESHAM, OREGON  
DESIGN REVIEW

THIRD FLOOR PLAN

PROJECT NO.  
PAM 17-26000460

JANUARY 18, 2018

REVISIONS:

GENERAL NOTES	KEYNOTES	LEGEND
		<ul style="list-style-type: none"> <li><span style="display: inline-block; width: 20px; height: 10px; background-color: #c8e6c9; border: 1px solid black; margin-right: 5px;"></span> STAFF COMMONS</li> <li><span style="display: inline-block; width: 20px; height: 10px; background-color: #bbdefb; border: 1px solid black; margin-right: 5px;"></span> MEDICAL OFFICES</li> <li><span style="display: inline-block; width: 20px; height: 10px; background-color: #ffe0b2; border: 1px solid black; margin-right: 5px;"></span> OFFICES</li> <li><span style="display: inline-block; width: 20px; height: 10px; background-color: #fff9c4; border: 1px solid black; margin-right: 5px;"></span> GROUP ROOMS</li> <li><span style="display: inline-block; width: 20px; height: 10px; background-color: #fff176; border: 1px solid black; margin-right: 5px;"></span> CIRCULATION</li> <li><span style="display: inline-block; width: 20px; height: 10px; background-color: #e0e0e0; border: 1px solid black; margin-right: 5px;"></span> UTILITIES</li> </ul>

NOTE: DRAWINGS ARE AT HALF SCALE WHEN PRINTED AT 11X17  
COPYRIGHT-CARLETON HART ARCHITECTURE DOES NOT REPRODUCE WITHOUT PERMISSION